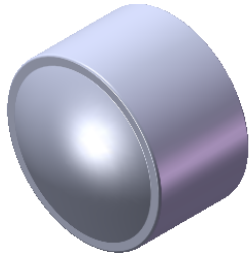


ASPHERIC COEFFICIENTS

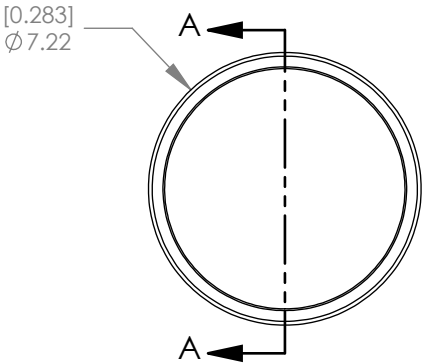
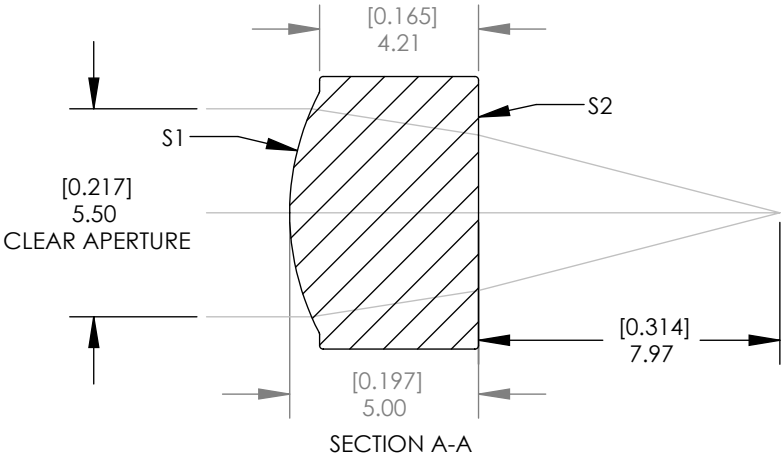
	R	k	A ₂	A ₄	A ₆	A ₈	A ₁₀
S1	6.64	-0.5500112	-	2.6715670E-06	-4.1960626E-07	-	-
S2	PLANO	-	-	-	-	-	-

$$z = \frac{Y^2}{R(1 + \sqrt{1 - (1 + k)Y^2 / R^2})} + A_2Y^2 + A_4Y^4 + A_6Y^6 + A_8Y^8 + A_{10}Y^{10}$$

ASPHERIC LENS
EQUATION



ISOMETRIC VIEW



SPECIFICATIONS:

DESIGN WAVELENGTH: 633nm
EFFECTIVE FOCAL LENGTH: 11.00mm
EFL TOLERANCE: ±1%
NUMERICAL APERTURE: 0.25
WORKING DISTANCE: 7.97mm
DIAMETER TOLERANCE: ±0.015mm
CENTER THICKNESS TOLERANCE: ±0.04mm
SURFACE QUALITY: 40-20 SCRATCH-DIG (INCLUDES ENTIRE BULK MATERIAL)
RMS WFE: ≤ DIFFRACTION LIMITED
MAGNIFICATION: INFINITE
REFRACTIVE INDEX (AT DESIGN WAVELENGTH): 1.603
INDEX TOLERANCE: ±0.002
COATING(S1&S2): BBAR Ravg<0.5% FROM 1050-1620nm

[in]
ALL DIMENSIONS ARE IN mm
THIS DRAWING IS FOR INFORMATION ONLY
NOT INTENDED FOR MANUFACTURING

THORLABS INC. PO BOX 366
NEWTON NJ

TITLE: -C COATED ASPHERIC COLLIMATING
LENS EFL=11.00mm

MATERIAL: ECO-550 SIZE A REV. C

SCALE: 5:1 SHEET 1 OF 1

DWG. NO. 13711-E01 PART NO. 352220-C

	NAME	DATE
DRAWN	SFG	11/13/2009
ENG APPR.	DJ	12/05/2009
MFG APPR.	DD	12/17/2009
PROPRIETARY AND CONFIDENTIAL		
THE INFORMATION CONTAINED IN THIS DRAWING IS THE SOLE PROPERTY OF THORLABS, INC. ANY REPRODUCTION IN PART OR AS A WHOLE WITHOUT THE WRITTEN PERMISSION OF THORLABS, INC. IS PROHIBITED.		