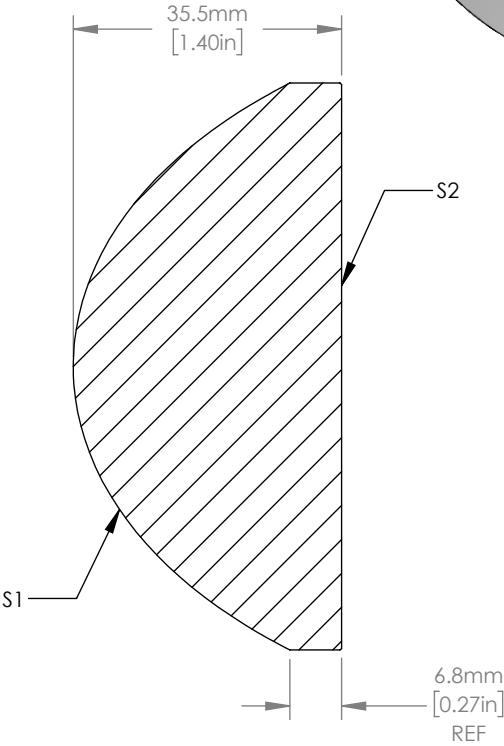
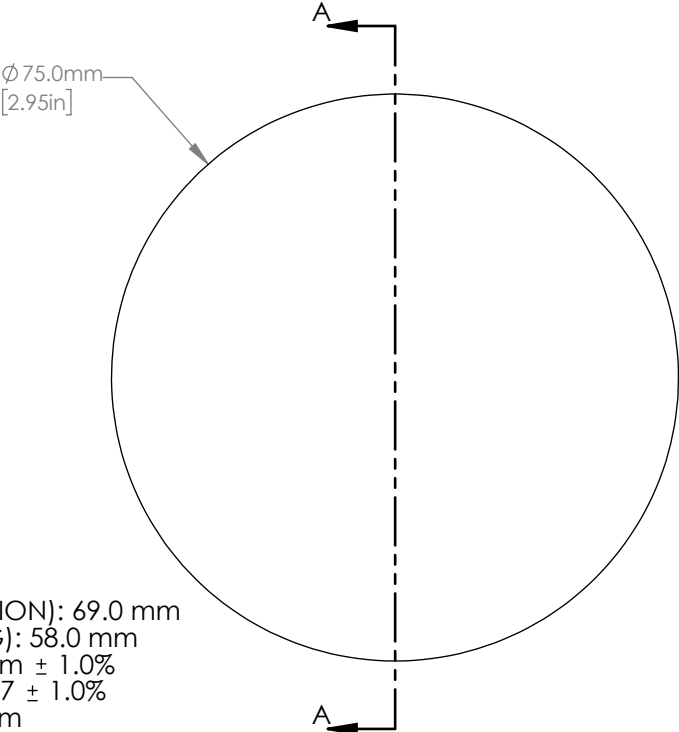
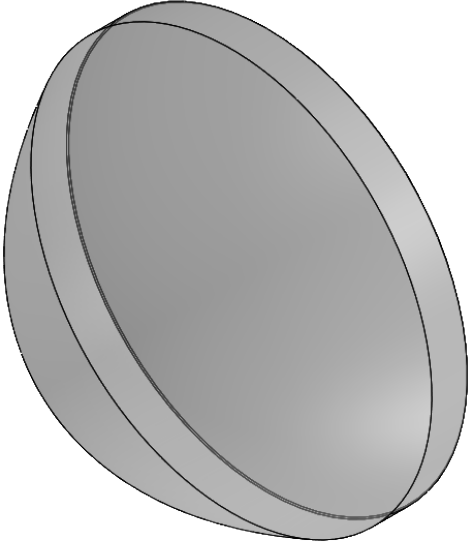


ASPHERIC COEFFICIENTS

	R	k	A ₄	A ₆	A ₈	A ₁₀	A ₁₂	A ₁₄	A ₁₆
S1	30.67	-0.905	1.6365958e-06	4.1292991e-10	9.3540375e-14	2.4530649e-17	-4.6067378e-21	5.5772398e-24	-2.6358211e-27
S2	INFINITE	-	-	-	-	-	-	-	-

ASPHERIC LENS EQUATION

$$z = \frac{Y^2}{R(1 + \sqrt{1 - (1 + k)Y^2 / R^2})} + A_4Y^4 + A_6Y^6 + A_8Y^8 + A_{10}Y^{10} + A_{12}Y^{12} + A_{14}Y^{14} + A_{16}Y^{16}$$

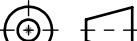


SECTION A-A

NOTES/SPECIFICATIONS:

- 1. CLEAR APERTURE (COLLIMATION): 69.0 mm
- 2. CLEAR APERTURE (FOCUSING): 58.0 mm
- 3. FOCAL LENGTH: EFL = 60.0 mm ± 1.0%
- 4. Nd: 1.517 ± 0.001 Vd: 64.167 ± 1.0%
- 5. DESIGN WAVELENGTH: 780 nm
- 6. NUMERICAL APERTURE: 0.62
- 7. WORKING DISTANCE (REF): 36.5 mm
- 8. DIAMETER TOLERANCE: +0.00/-0.05 mm
- 9. THICKNESS TOLERANCE: ± 0.1 mm
- 10. SURFACE QUALITY: 60-40 SCRATCH-DIG
- 11. RMS WAVEFRONT ERROR: <0.5 μm
- 12. SAG DEVIATION (POWER)(S1): ± 7.5 μm
- 13. RMS IRREGULARITY (S1): <3 FRINGES
- 14. CENTRATION: <3 arcmin
- 15. MAGNIFICATION: INFINITE
- 16. COATING (S1 & S2): BBAR 1050-1700 nm, Ravg: <0.5%, 0° AOI

FOR INFORMATION ONLY
NOT FOR MANUFACTURING PURPOSES

DRAWING PROJECTION			THORLABS	
	NAME	DATE	Ø 75.0 mm ASPHERIC LENS, NA = 0.62, f = 60.0 mm, C-COAT	
DRAWN	DFS	12/DEC/19	MATERIAL N-BK7	
APPROVAL	CA	10/FEB/20		
COPYRIGHT © 2020 BY THORLABS			ITEM # AL7560-C	REV G APPROX WEIGHT 250 g
VALUES IN PARENTHESIS ARE CALCULATED AND MAY CONTAIN ROUND OFF ERRORS				