

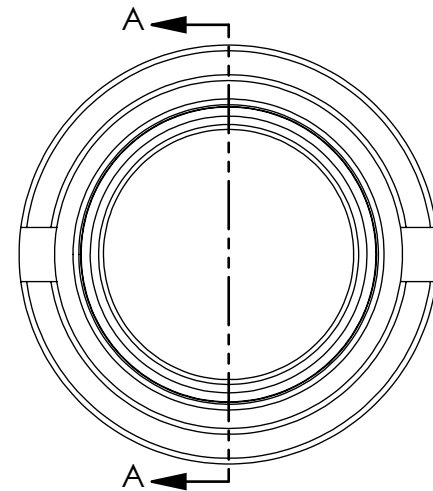
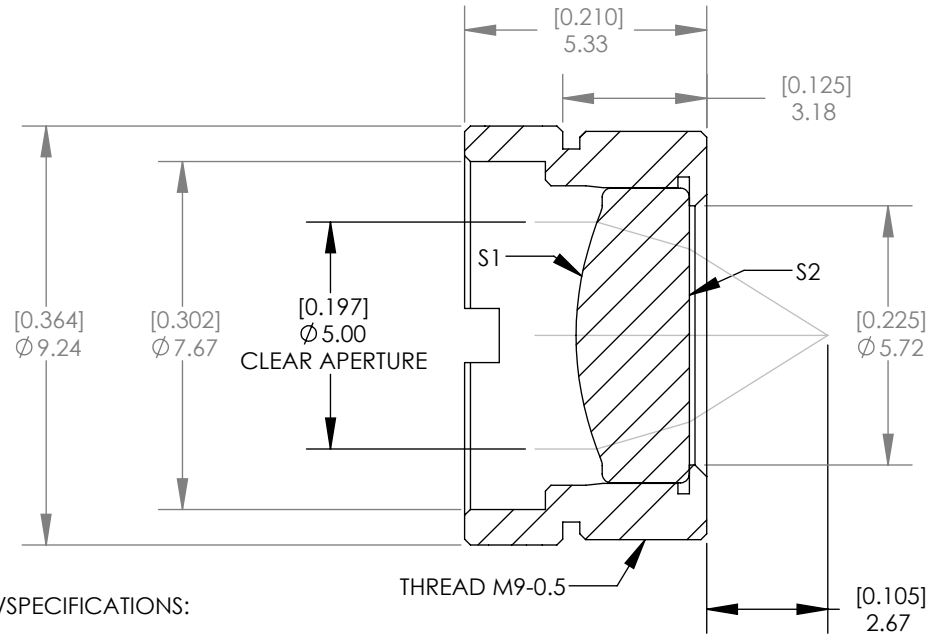
ASPHERIC COEFFICIENTS

	R	k	A ₄	A ₆	A ₈	A ₁₀	A ₁₂
S1	6.52	0.2819169	-9.7637443E-4	-1.4399786E-5	0	0	0
S2	PLANO	-	-	-	-	-	-

$$z = \frac{Y^2}{R(1 + \sqrt{1 - (1+k)Y^2/R^2})} + A_4Y^4 + A_6Y^6 + A_8Y^8 + A_{10}Y^{10} + A_{12}Y^{12}$$



2:1 ISOMETRIC VIEW FOR REFERENCE ONLY



NOTES/SPECIFICATIONS:

- DESIGN WAVELENGTH: 2.5μm
- REFRACTIVE INDEX: 2.630 ±0.003
- EFFECTIVE FOCAL LENGTH: 4.0mm ±1%
- WORKING DISTANCE: 2.67mm
- NUMERICAL APERTURE: 0.56
- CENTER THICKNESS (LENS): 2.50mm ±0.05mm
- RMS WFE: <DIFFRACTION LIMITED
- MAGNIFICATION: INFINITE
- SURFACE QUALITY: 80-50 SCRATCH DIG
- WEDGE: < 4arcmin
- COATING(S1&S2): BBAR Ravg<1.0% FROM 8-12μm

SECTION A-A

[in]
 ALL DIMENSIONS ARE IN mm
 THIS DRAWING IS FOR INFORMATION ONLY
 NOT INTENDED FOR MANUFACTURING

	NAME	DATE
DRAWN	SFG	12/03/2009
ENG APPR.	DJ	02/18/2010
MFG APPR.	DD	02/19/2010

PROPRIETARY AND CONFIDENTIAL

THE INFORMATION CONTAINED IN THIS DRAWING IS THE SOLE PROPERTY OF THORLABS, INC. ANY REPRODUCTION IN PART OR AS A WHOLE WITHOUT THE WRITTEN PERMISSION OF THORLABS, INC. IS PROHIBITED.

THORLABS INC. PO BOX 366
 NEWTON NJ

TITLE: MOUNTED BLACK DIAMOND-2 INFRARED ASPHERIC COLLIMATING LENS WITH -F COATING
 EFL = 4.0 mm

MATERIAL: BD-2 SIZE A REV. A

SCALE: 6:1 SHEET 1 OF 1

DWG. NO. 20716-E01 PART NO. C036TME-F