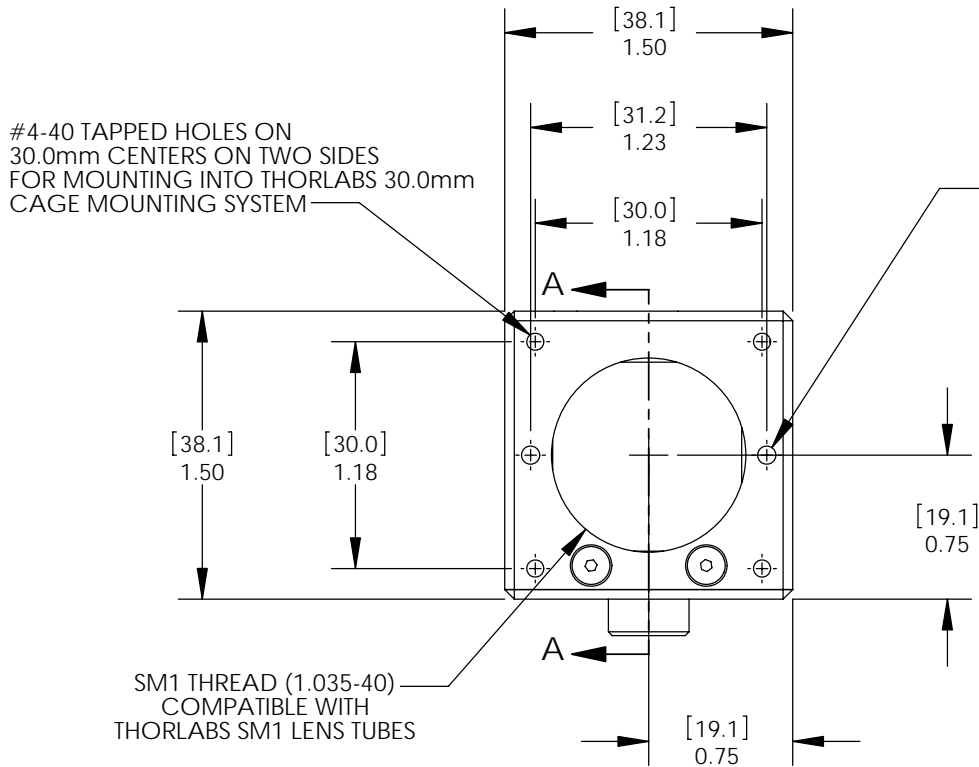
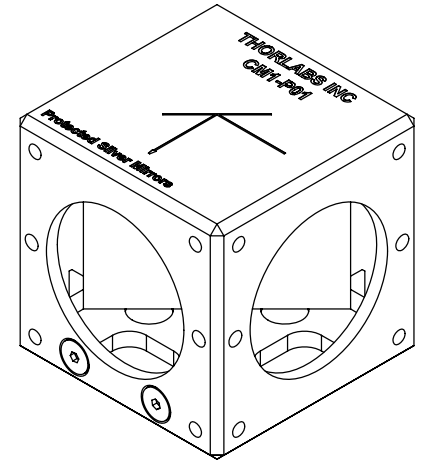
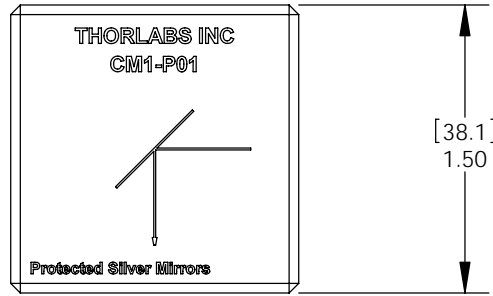
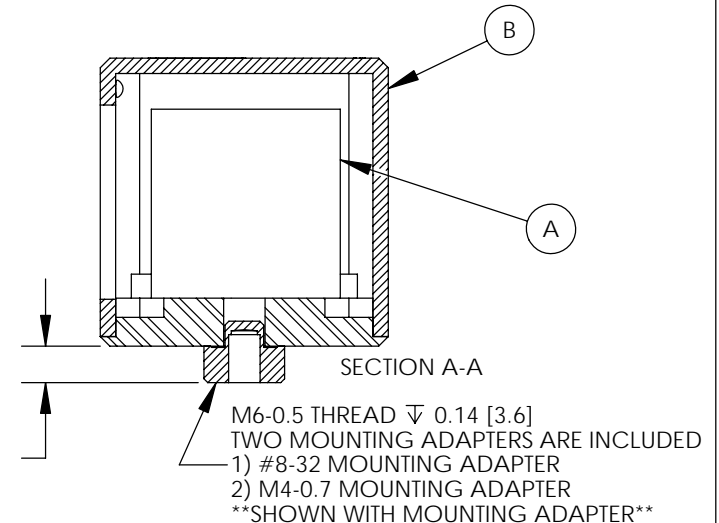


	ITEM	MATERIAL
(A)	MIRROR THORLABS P/N# MRA25-P01	N-BK7
(B)	MECHANICAL HOUSING	BLACK ANODIZED 6061-T6 ALUMINUM



Ø0.09" [2.3mm] ∇0.08" [2.0mm] LOCATION HOLES
FOR USE WITH THORLABS CUBE CONNECTOR
THORLABS PART NUMBER: CM1-CC



SPECIFICATIONS:

OPTIC IS ALIGNED FOR REFLECTIVE BEAMS
TO EXIT AT 90° ±20 arcmin
OPTICAL SPECIFICATIONS:
REFLECTIVITY/WAVELENGTH RANGE:
Ravg >96% 400-700nm
Ravg >97.5% 700nm-2.0µm
CLEAR APERTURE: > 70% OF FACE LENGTH & WIDTH
SURFACE FLATNESS: λ/10 OVER CLEAR APERTURE
SURFACE QUALITY: 40-20 SCRATCH-DIG

DIMENSIONS ARE IN: [mm]
in

THIS DRAWING IS FOR INFORMATION ONLY
NOT INTENDED FOR MANUFACTURING

THORLABS INC. PO BOX 366
NEWTON NJ

	NAME	DATE
DRAWN	BAG	01/27/2009
ENG APPR.	DJ	02/05/2009
MFG APPR.	DD	02/09/2009

TITLE: MOUNTED PROTECTED SILVER
RIGHT ANGLE MIRROR

MATERIAL: SEE TABLE SIZE A B

SCALE: 1:1 SHEET 1 OF 1

DWG. NO. 13638-E01 PART NO. CM1-P01