



**Cuvette Holder**

**CVH100-COL  
Quick Reference Guide**



**2018**

---

Version: 2.0  
Date: 09-Jul-2018

# Contents

<b>Foreword</b>	<b>2</b>
<b>1 General Information</b>	<b>3</b>
1.1 Safety _____	3
1.2 Ordering Codes and Accessories _____	3
<b>2 Getting Started</b>	<b>3</b>
2.1 Parts List _____	3
<b>3 Operating Instruction</b>	<b>4</b>
<b>4 Appendix</b>	<b>4</b>
4.1 Dimensions _____	4
4.2 Warranty _____	5
4.3 Copyright and Exclusion of Reliability _____	6
4.4 Thorlabs 'End of Life' Policy _____	6
4.5 Thorlabs Worldwide Contacts _____	8

---

We aim to develop and produce the best solution for your application in the field of optical measurement technique. To help us to live up to your expectations and improve our products permanently we need your ideas and suggestions. Therefore, please let us know about possible criticism or ideas. We and our international partners are looking forward to hearing from you.

*Thorlabs GmbH*

**Warning**

Sections marked by this symbol explain dangers that might result in personal injury or death. Always read the associated information carefully, before performing the indicated procedure.

**Attention**

Paragraphs preceded by this symbol explain hazards that could damage the instrument and the connected equipment or may cause loss of data.

**Note**

This manual also contains "NOTES" and "HINTS" written in this form.

Please read these advices carefully!

# 1 General Information

## 1.1 Safety

### Attention

All statements regarding safety of operation and technical data in this instruction manual will only apply when the unit is operated correctly as it was designed for.

Only with written consent from *Thorlabs* may changes to single components be carried out or components not supplied by *Thorlabs* be used.

This precision device is only transportable if duly packed into the complete original packaging. If necessary, ask for a replacement package.

## 1.2 Ordering Codes and Accessories

CVH100-COL	SMA fiber collimator (SM1) with ½" lens mounting option
SM05RR	SM05 retaining ring
SM005LTRR	SM05 Series stress-free retaining ring
M25L01	SMA-SMA MM fiber, 200µm, Low-OH, 1m ( <b>VIS/NIR</b> )
BFH22-200-030-SMA-1M *)	SMA-SMA MM fiber, 200µm, High-OH, 1m ( <b>UV</b> )

\*) Non-standard item, on special request only!

Please see our website for further information <http://www.thorlabs.com/>

# 2 Getting Started

## 2.1 Parts List

Inspect the shipping container for damage.

If the shipping container seems to be damaged, keep it until you have inspected the contents and you have inspected the CVH100-COL mechanically and electrically.

Verify that you have received the following items within the package:

- Cuvette holder SMA-SM1 fiber collimator for 1/2" lenses
- spacer tube 6.8mm
- spacer tube 9.6mm
- SM05 retaining ring
- This quick reference guide

### Note

Lens is not included with CVH100-COL! Please see [lens selection guide](#)<sup>4</sup>.

### 3 Operating Instruction

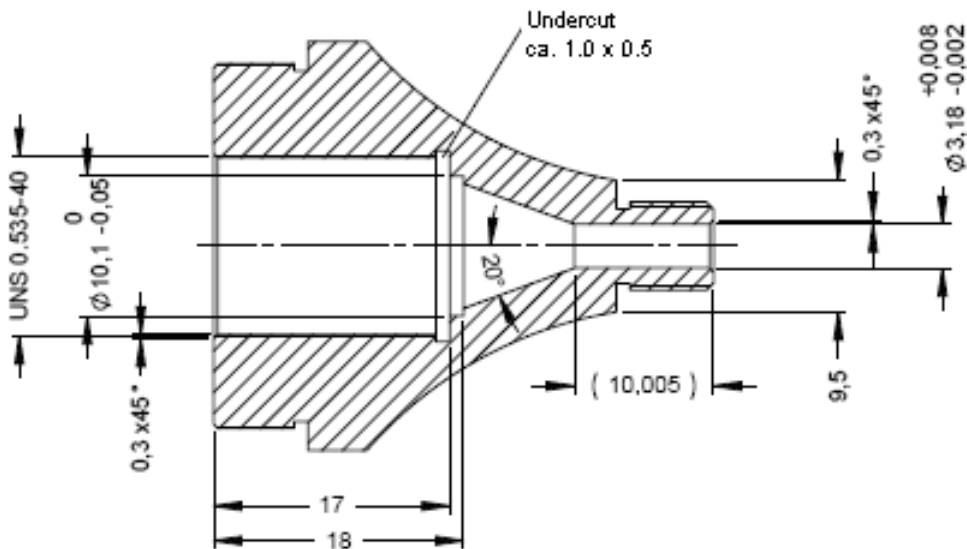
The two supplied spacers are supplied to quickly position ½" lenses 20mm focal length. The following table shows suitable combination of spacers and lenses, with the focus on different opt. materials.

Lens item #	Focal length	Lens material	Short spacer (6.8mm)	Long spacer (9.6mm)
LA1074	f=20mm	Glass, N-BK7	X	
LA4647	f=20mm	Fused silica	X	
LA5315	f=20mm	CaF <sub>2</sub>	X	
LA0506-E	f=20mm	BaF <sub>2</sub>		X
LA9015-F	f=20mm	Ge		X
LA7733-F	f=20mm	ZnSe		X
LA8126-E	f=20mm	Si		X

For plano-convex lenses it is recommended to mount the flat side pointing to the fiber. Fix the lens with the supplied retaining ring.

## 4 Appendix

### 4.1 Dimensions



## 4.2 Warranty

Thorlabs GmbH warrants material and production of the CVH100-COL for a period of 24 months starting with the date of shipment. During this warranty period Thorlabs GmbH will see to defaults by repair or by exchange if these are entitled to warranty.

For warranty repairs or service the unit must be sent back to Thorlabs GmbH. The customer will carry the shipping costs to Thorlabs GmbH, in case of warranty repairs Thorlabs GmbH will carry the shipping costs back to the customer.

If no warranty repair is applicable the customer also has to carry the costs for back shipment.

In case of shipment from outside EU duties, taxes etc. which should arise have to be carried by the customer.

Thorlabs GmbH warrants the hard- and/or software determined by Thorlabs GmbH for this unit to operate fault-free provided that they are handled according to our requirements. However, Thorlabs GmbH does not warrant a fault free and uninterrupted operation of the unit, of the software or firmware for special applications nor this instruction manual to be error free. Thorlabs GmbH is not liable for consequential damages.

### Restriction of Warranty

The warranty mentioned before does not cover errors and defects being the result of improper treatment, software or interface not supplied by us, modification, misuse or operation outside the defined ambient stated by us or unauthorized maintenance.

Further claims will not be consented to and will not be acknowledged. Thorlabs GmbH does explicitly not warrant the usability or the economical use for certain cases of application.

Thorlabs GmbH reserves the right to change this instruction manual or the technical data of the described unit at any time.

### 4.3 Copyright and Exclusion of Reliability

*Thorlabs GmbH* has taken every possible care in preparing this document. We however assume no liability for the content, completeness or quality of the information contained therein. The content of this document is regularly updated and adapted to reflect the current status of the hardware and/or software. We furthermore do not guarantee that this product will function without errors, even if the stated specifications are adhered to.

Under no circumstances can we guarantee that a particular objective can be achieved with the purchase of this product.

Insofar as permitted under statutory regulations, we assume no liability for direct damage, indirect damage or damages suffered by third parties resulting from the purchase of this product. In no event shall any liability exceed the purchase price of the product.

Please note that the content of this document is neither part of any previous or existing agreement, promise, representation or legal relationship, nor an alteration or amendment thereof. All obligations of *Thorlabs GmbH* result from the respective contract of sale, which also includes the complete and exclusively applicable warranty regulations. These contractual warranty regulations are neither extended nor limited by the information contained in this document. Should you require further information on this product, or encounter specific problems that are not discussed in sufficient detail in the document, please contact your local *Thorlabs GmbH* dealer or system installer.

All rights reserved. This document may not be reproduced, transmitted or translated to another language, either as a whole or in parts, without the prior written permission of *Thorlabs GmbH*.

Copyright © Thorlabs GmbH 2018. All rights reserved.

### 4.4 Thorlabs 'End of Life' Policy

As required by the WEEE (Waste Electrical and Electronic Equipment Directive) of the European Community and the corresponding national laws, Thorlabs GmbH offers all end users in the EC the possibility to return “end of life” units without incurring disposal charges.

This offer is valid for Thorlabs GmbH electrical and electronic equipment

- sold after August 13<sup>th</sup> 2005
- marked correspondingly with the crossed out “wheelie bin” logo (see figure below)
- sold to a company or institute within the EC
- currently owned by a company or institute within the EC
- still complete, not disassembled and not contaminated

As the WEEE directive applies to self contained operational electrical and electronic products, this “end of life” take back service does not refer to other Thorlabs GmbH products, such as

- pure OEM products, that means assemblies to be built into a unit by the user (e. g. OEM laser driver cards)
- components
- mechanics and optics
- left over parts of units disassembled by the user (PCB's, housings etc.).

#### Waste treatment on your own responsibility



If you do not return an “end of life” unit to Thorlabs GmbH, you must hand it to a company specialized in waste recovery. Do not dispose of the unit in a litter bin or at a public waste disposal site.

WEEE Number (Germany) : DE97581288

### Ecological background

It is well known that waste treatment pollutes the environment by releasing toxic products during decomposition. The aim of the European RoHS Directive is to reduce the content of toxic substances in electronic products in the future.

The intent of the WEEE Directive is to enforce the recycling of WEEE. A controlled recycling of end-of-life products will thereby avoid negative impacts on the environment.



*Crossed out  
"Wheellie Bin" symbol*

## 4.5 Thorlabs Worldwide Contacts

### USA, Canada, and South America

Thorlabs, Inc.  
56 Sparta Avenue  
Newton, NJ 07860  
USA  
Tel: 973-300-3000  
Fax: 973-300-3600  
[www.thorlabs.com](http://www.thorlabs.com)  
[www.thorlabs.us](http://www.thorlabs.us) (West Coast)  
Email: [sales@thorlabs.com](mailto:sales@thorlabs.com)  
Support: [techsupport@thorlabs.com](mailto:techsupport@thorlabs.com)

### UK and Ireland

Thorlabs Ltd.  
1 Saint Thomas Place, Ely  
Cambridgeshire CB7 4EX  
United Kingdom  
Tel: +44-1353-654440  
Fax: +44-1353-654444  
[www.thorlabs.com](http://www.thorlabs.com)  
Email: [sales.uk@thorlabs.com](mailto:sales.uk@thorlabs.com)  
Support: [techsupport.uk@thorlabs.com](mailto:techsupport.uk@thorlabs.com)

### Europe

Thorlabs GmbH  
Hans-Böckler-Str. 6  
85221 Dachau  
Germany  
Tel: +49-8131-5956-0  
Fax: +49-8131-5956-99  
[www.thorlabs.de](http://www.thorlabs.de)  
Email: [europe@thorlabs.com](mailto:europe@thorlabs.com)

### Scandinavia

Thorlabs Sweden AB  
Bergfotsgatan 7  
431 35 Mölndal  
Sweden  
Tel: +46-31-733-30-00  
Fax: +46-31-703-40-45  
[www.thorlabs.com](http://www.thorlabs.com)  
Email: [scandinavia@thorlabs.com](mailto:scandinavia@thorlabs.com)

### France

Thorlabs SAS  
109, rue des Côtes  
78600 Maisons-Laffitte  
France  
Tel: +33-970 444 844  
Fax: +33-825 744 800  
[www.thorlabs.com](http://www.thorlabs.com)  
Email: [sales.fr@thorlabs.com](mailto:sales.fr@thorlabs.com)

### Brazil

Thorlabs Vendas de Fotônicos Ltda.  
Rua Riachuelo, 171  
São Carlos, SP 13560-110  
Brazil  
Tel: +55-16-3413 7062  
Fax: +55-16-3413 7064  
[www.thorlabs.com](http://www.thorlabs.com)  
Email: [brasil@thorlabs.com](mailto:brasil@thorlabs.com)

### Japan

Thorlabs Japan, Inc.  
3-6-3 Kitamachi  
Nerima-ku, Tokyo 179-0081  
Japan  
Tel: +81-3-6915-7701  
Fax: +81-3-6915-7716  
[www.thorlabs.co.jp](http://www.thorlabs.co.jp)  
Email: [sales@thorlabs.jp](mailto:sales@thorlabs.jp)

### China

Thorlabs China  
Room A101, No. 100  
Lane 2891, South Qilianshan Road  
Putuo District  
Shanghai 200331  
China  
Tel: +86-21-60561122  
Fax: +86-21-32513480  
[www.thorlabs.com](http://www.thorlabs.com)  
Email: [chinasales@thorlabs.com](mailto:chinasales@thorlabs.com)