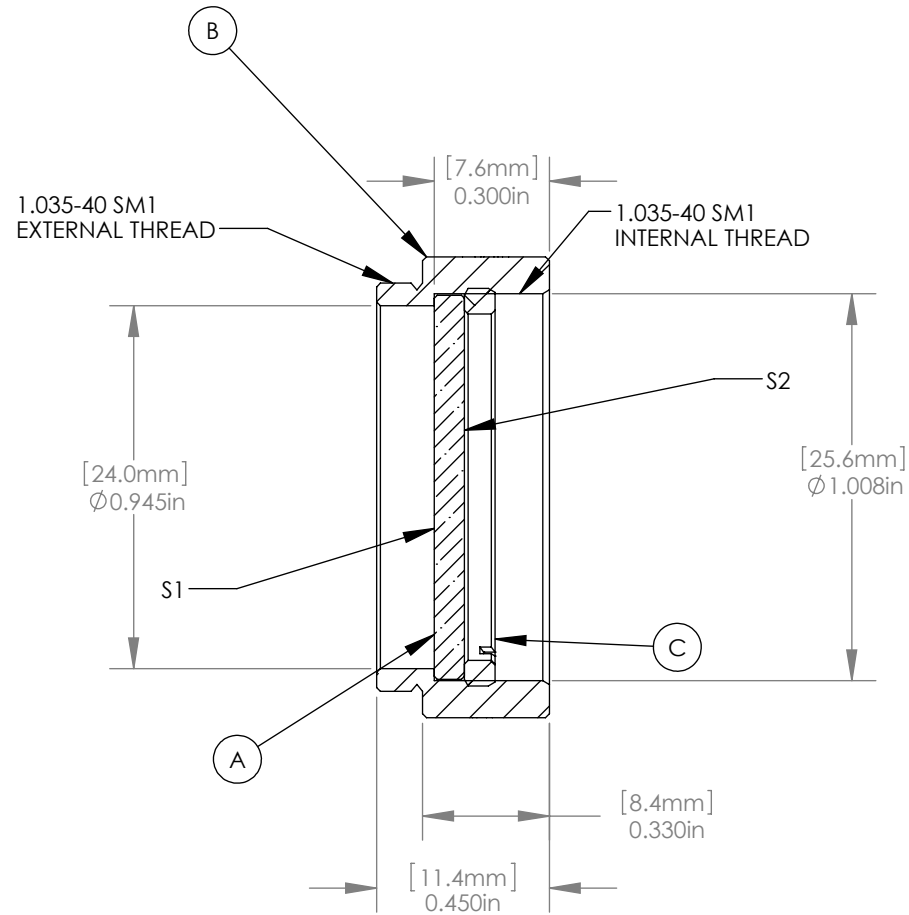
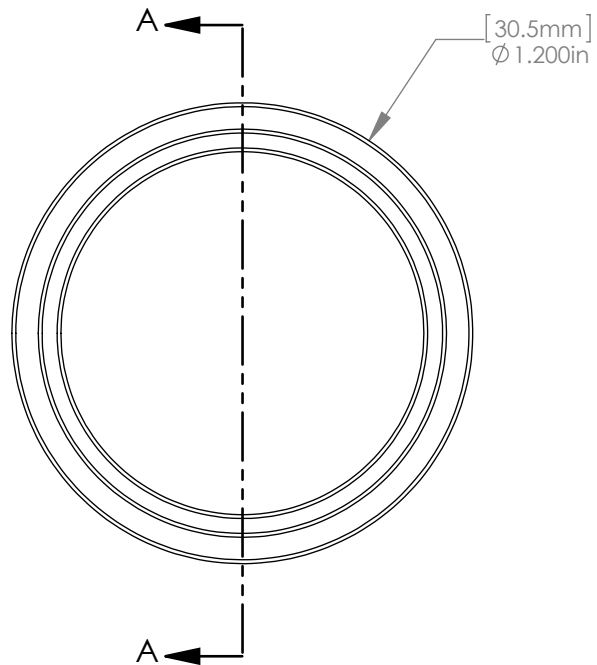


PART	PART NO.	MATERIAL
A	DG10-1500	N-BK7
B	LENS MOUNT	6061-T6 ALUMINUM
C	SM1RR	6061-T6 ALUMINUM



SECTION A-A
SCALE 2 : 1

NOTES/SPECIFICATIONS:

1. CLEAR APERTURE: >90% DIAMETER
2. SURFACE FLATNESS (S1): 4λ @ 632.8nm OVER CLEAR APERTURE
3. SURFACE QUALITY (S1) : 80-50 SCRATCH-DIG
4. SURFACE FINISH (S2): UNIFORM FINE GRIND #1500 GRIT
5. PARALLELISM: 3 arcmin

FOR INFORMATION ONLY
NOT FOR MANUFACTURING PURPOSES

DRAWING PROJECTION			THORLABS www.thorlabs.com	
NAME	DATE	MOUNTED DG10-1500		
DRAWN	JLE	11/NOV/08	MATERIAL	
APPROVAL	DD	26/JUL/12	SEE TABLE	REV C
COPYRIGHT © 2010 BY THORLABS			ITEM #	APPROX WEIGHT
VALUES IN PARENTHESIS ARE CALCULATED AND MAY CONTAIN ROUND OFF ERRORS			DG10-1500-MD	0.04 kg