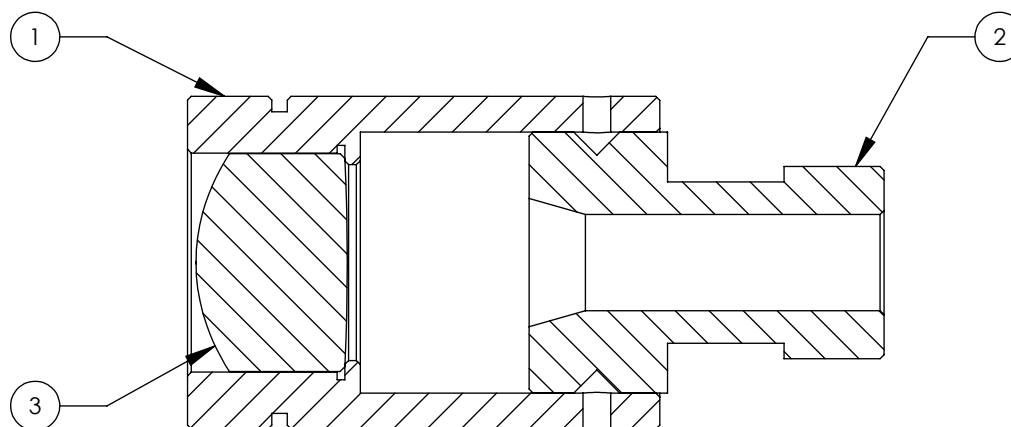
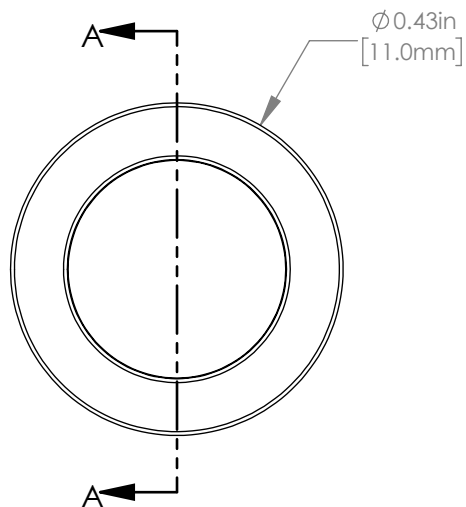
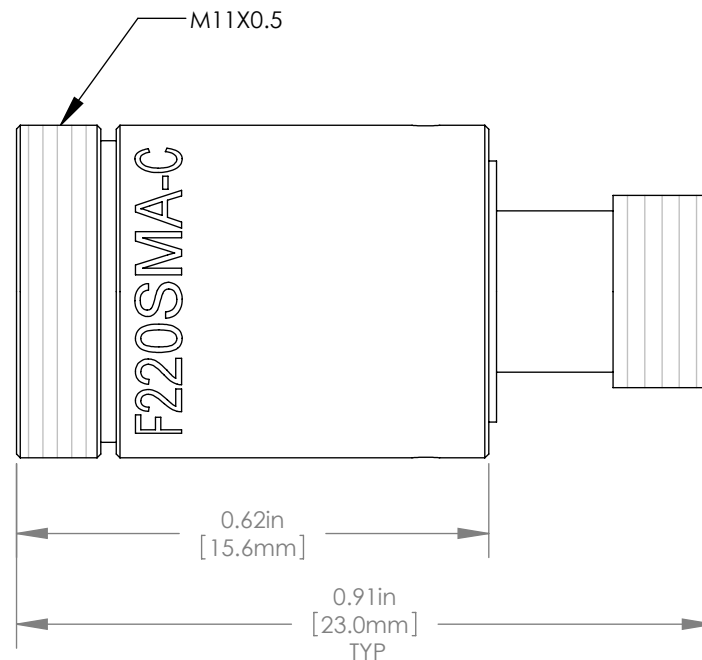


	ITEM	MATERIAL
①	HOUSING	303 STAINLESS STEEL
②	SMA PLUG ADAPTER	303 STAINLESS STEEL
③	Ø7.2mm, f=11.26 mm LENS	MOLDED ASPHERE



SPECIFICATIONS

DESIGN WAVELENGTH	1310 nm
DESIGN MFD	9.2 μm
OUTPUT 1/e ² BEAM DIAMETER	2.04 mm
FULL ANGLE BEAM DIVERGENCE	0.047° ^{+0.01} _{-0.00}
AR COATING	Ravg<0.5% FROM 1050-1700nm



SECTION A-A

THORLABS FIBER COLLIMATION PACKAGES ARE DESIGNED TO COLLIMATE A LASER BEAM PROPAGATING OUT THE END OF AN OPTICAL FIBER. EACH COLLIMATION PACKAGE IS FACTORY ALIGNED SO THAT THE LENS IS ONE FOCAL LENGTH AWAY FROM THE OUTPUT END OF THE FIBER.

FOR INFORMATION ONLY
NOT FOR MANUFACTURING PURPOSES

DRAWING PROJECTION					 www.thorlabs.com	
	NAME	DATE			λ=1310nm SMA COLLIMATION PACKAGE, NA=0.24 f=11.26mm	
DRAWN	KMC	23/JUN/17	MATERIAL		REV	
APPROVAL	DD	26/JUN/17	SEE TABLE		E	
COPYRIGHT © 2017 BY THORLABS			ITEM #	APPROX WEIGHT		
VALUES IN PARENTHESIS ARE CALCULATED AND MAY CONTAIN ROUND OFF ERRORS			F220SMA-C	8.47 g		