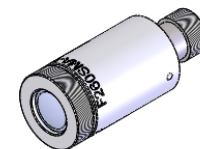
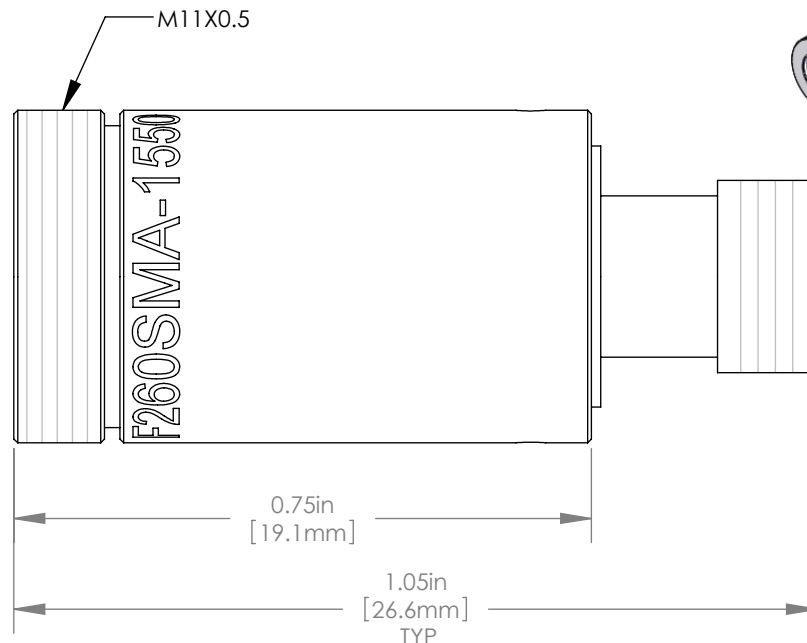
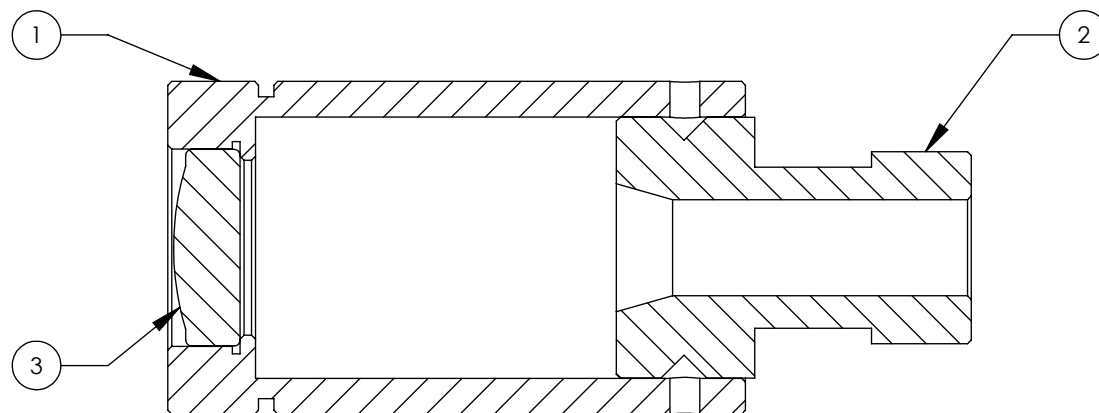
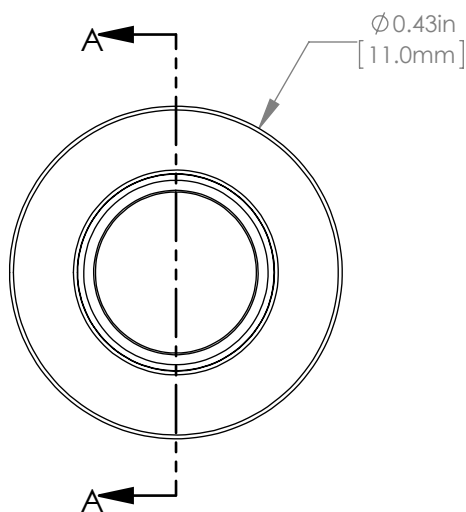


	ITEM	MATERIAL
①	HOUSING	303 STAINLESS STEEL
②	SMA PLUG ADAPTER	303 STAINLESS STEEL
③	Ø 6.5mm, f=15.58mm LENS	MOLDED ASPHERE

SPECIFICATIONS

DESIGN WAVELENGTH	1550nm
DESIGN MFD	10.4 μm
OUTPUT 1/e <sup>2</sup> BEAM DIAMETER	3.00 mm
FULL ANGLE BEAM DIVERGENCE	0.038° <sup>+0.01</sup> / <sub>-0.00</sub>
AR COATING	Ravg<1.0% FROM 1050-1620nm



THORLABS FIBER COLLIMATION PACKAGES ARE DESIGNED TO COLLIMATE A LASER BEAM PROPAGATING OUT THE END OF AN OPTICAL FIBER. EACH COLLIMATION PACKAGE IS FACTORY ALIGNED SO THAT THE BEST POSSIBLE DIVERGENCE IS ACHIEVED.

FOR INFORMATION ONLY  
NOT FOR MANUFACTURING PURPOSES

DRAWING PROJECTION			THORLABS	
	NAME	DATE	www.thorlabs.com	
DRAWN	ST	21/OCT/14	λ=1550nm SMA COLLIMATION PACKAGE, NA=0.16 f=15.58mm	
APPROVAL	NE	05/DEC/14	MATERIAL	REV D
COPYRIGHT © 2014 BY THORLABS			SEE TABLE	
VALUES IN PARENTHESIS ARE CALCULATED AND MAY CONTAIN ROUND OFF ERRORS			ITEM #	APPROX WEIGHT
			F260SMA-1550	9.0 g