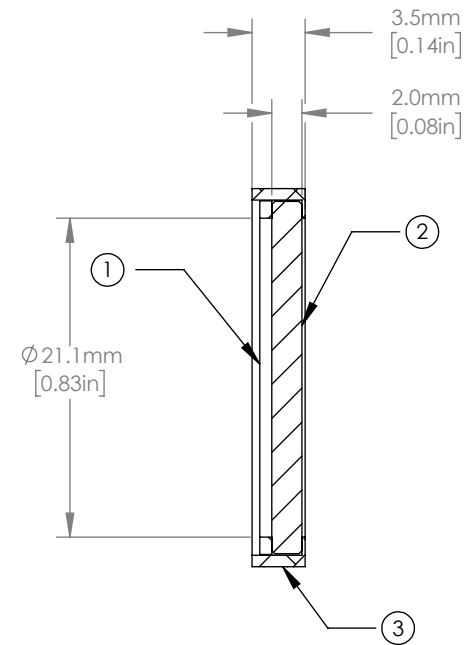
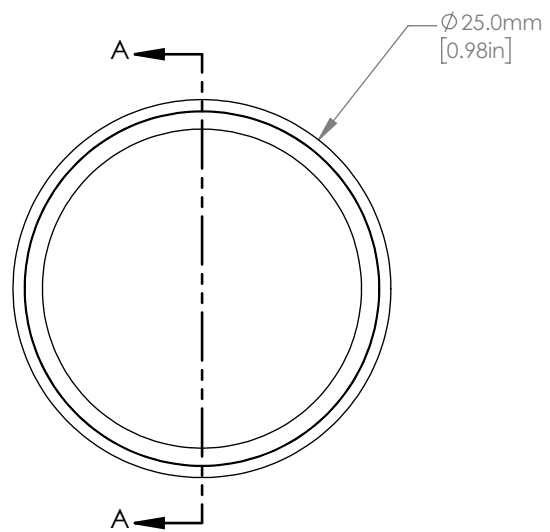


	PART DESCRIPTION	MATERIAL
①	ADHESIVE RING	PLASTIC
②	BANDPASS FILTER	UVFS
③	ENGRAVED HOUSING	ANODIZED ALUMINUM



NOTES/SPECIFICATIONS:

- CLEAR APERTURE: $\varnothing 21.1$ mm
- TRANSMITTED WAVEFRONT ERROR: $\lambda/2$ AT 632.8 nm OVER CLEAR APERTURE
- SURFACE QUALITY: 60-40 SCRATCH-DIG
- COATING: BANDPASS FILTER, HARDCOATED
TRANSMISSION: >90% AT 650 nm
FWHM: 40 nm
BLOCKING: >OD5 200 nm-611 nm, AND 690-1200 nm
0° AOI

FOR INFORMATION ONLY
NOT FOR MANUFACTURING PURPOSES

DRAWING PROJECTION		
NAME	DATE	
DRAWN JAC	27/MAY/21	
APPROVAL DD	27/MAY/21	
COPYRIGHT © 2021 BY THORLABS		
VALUES IN PARENTHESIS ARE CALCULATED AND MAY CONTAIN ROUND OFF ERRORS		

THORLABS www.thorlabs.com		
PREMIUM BANDPASS FILTER, $\varnothing 25$ mm, CWL: 650 nm, FWHM: 40 nm		
MATERIAL	SEE TABLE	REV C
ITEM # FBH650-40	APPROX WEIGHT 3 g	