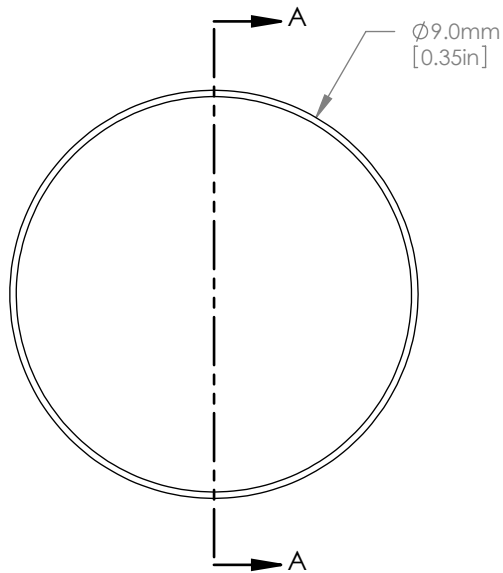
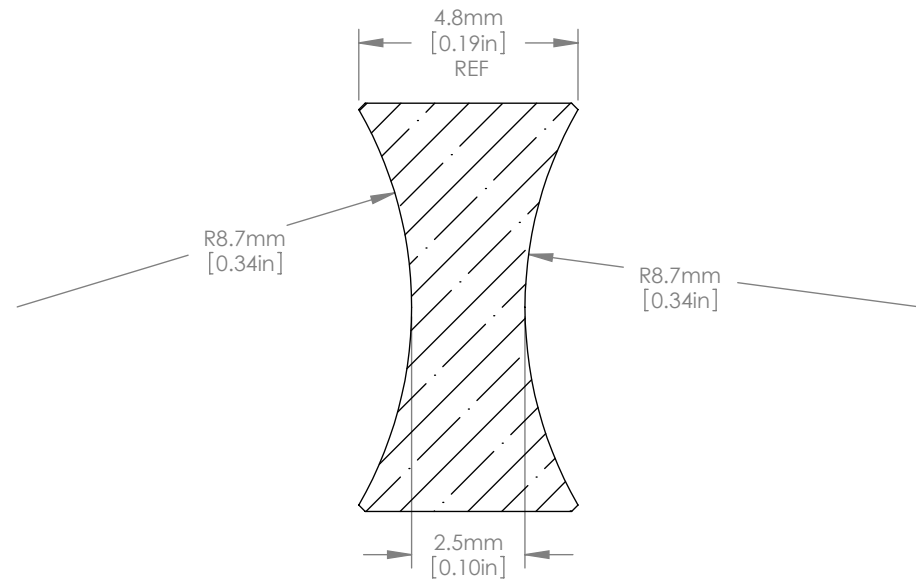




SCALE 1:1



$\varnothing 9.0\text{mm}$
[0.35in]



R8.7mm
[0.34in]

R8.7mm
[0.34in]

NOTES/SPECIFICATIONS:

1. DESIGN WAVELENGTH: 588nm
2. FOCAL LENGTH: $f=-9.0\text{mm} \pm 1\%$
3. BACK FOCAL LENGTH(REF): $bf=-9.8\text{mm}$
4. CLEAR APERTURE: $>90\%$
5. SURFACE QUALITY: 40-20 SCRATCH-DIG
6. CENTRATION: $\leq 3\text{arcmin}$
7. DIAMETER TOLERANCE: $+0.0/-0.1\text{mm}$
8. THICKNESS TOLERANCE: $\pm 0.1\text{mm}$

FOR INFORMATION ONLY
NOT FOR MANUFACTURING PURPOSES

DRAWING
PROJECTION



	NAME	DATE
DRAWN	GG	15/NOV/10
APPROVAL	JC	13/DEC/10

COPYRIGHT © 2010 BY THORLABS

VALUES IN PARENTHESIS ARE CALCULATED
AND MAY CONTAIN ROUND OFF ERRORS

THORLABS
www.thorlabs.com

D=9.0mm F=-9.0mm UVFS
BI CONCAVE LENS

MATERIAL	REV
UV GRADE FUSED SILICA	B
ITEM #	APPROX WEIGHT
LD4271	0.02 kg