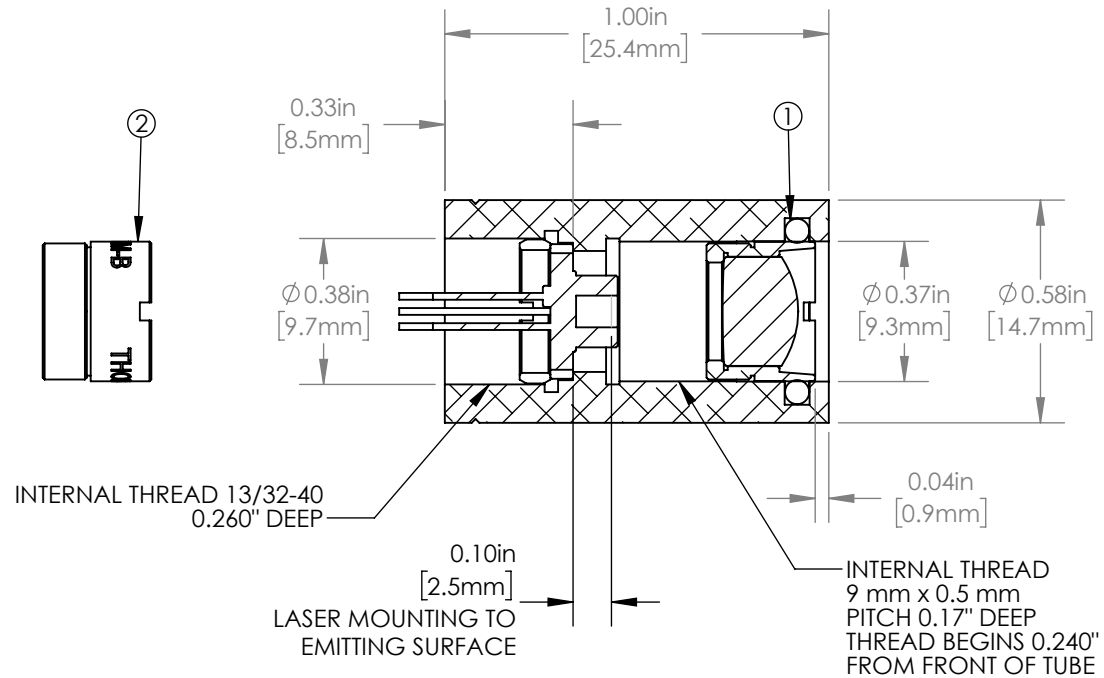
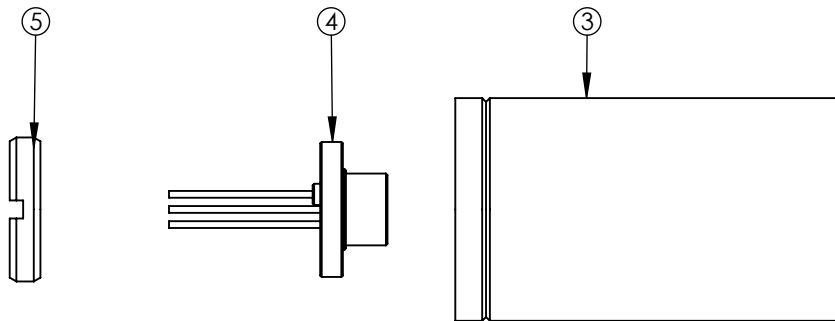
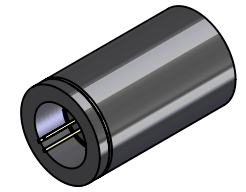


NUMBER	PART	MATERIAL
①	O-RING (PROVIDES FRICTION FIT)	RUBBER
②	f=11.0 mm NA=0.26 AR 650-1050 nm MOUNTED ASPHERIC LENS	D-K59
③	COLLIMATION TUBE	6061-T6 ALUMINUM
④	9.0 mm LASER DIODE (SOLD SEPARATELY)	-
⑤	RETAINING RING FOR 9.0 mm DIODE	6061-T6 ALUMINUM



NOTES/SPECIFICATIONS:

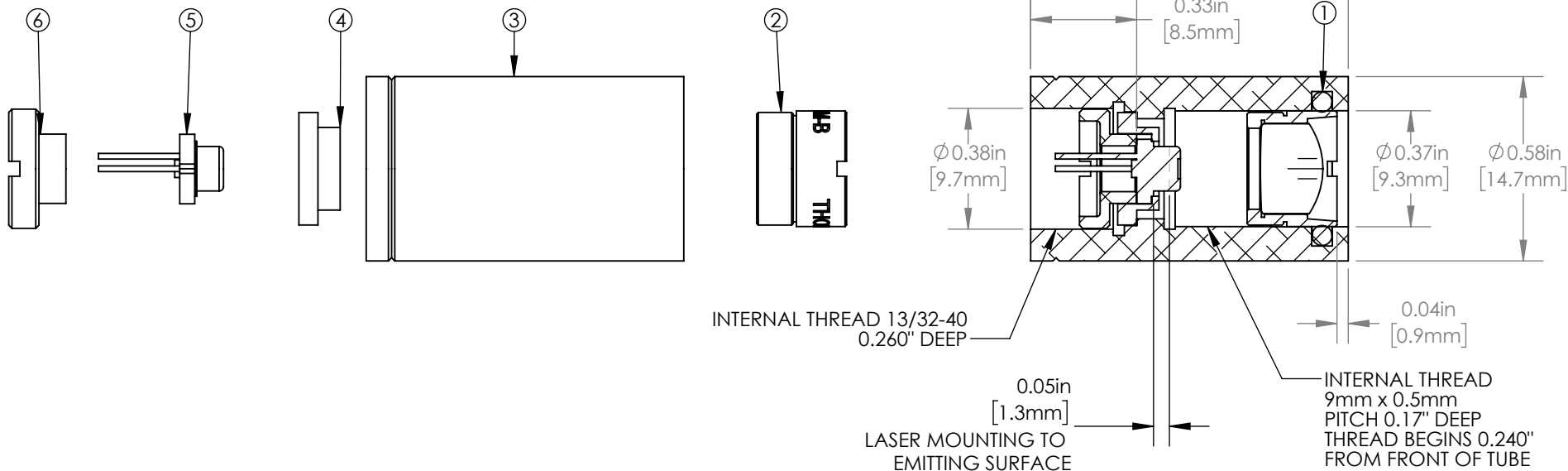
1. LENS CELL HAS ± 1.0 mm ADJUSTMENT RANGE FROM POSITION SHOWN, WHICH WAS DESIGNED FOR TOSHIBA STANDARD 9 mm LASER PACKAGE
2. DESIGN REQUIRES THE EMITTING SURFACE OF THE LASER TO BE BETWEEN 1.7-3.2 mm FROM THE $\varnothing 9$ mm MOUNTING FLANGE OF THE LASER
3. USE THORLABS SPANNER WRENCH SPW301 FOR RETAINING RINGS
4. PRINCIPAL PLANE OF LENS IS NOMINALLY 13.4 mm FROM LASER MOUNTING SURFACE

SHEET 1 OF 2: FOR 5.6 mm LASER DIODE CONFIGURATION SEE SHEET 2

FOR INFORMATION ONLY
NOT FOR MANUFACTURING PURPOSES

DRAWING PROJECTION			 www.thorlabs.com	
NAME	DATE			
DRAWN	KMC	18/SEP/17	LT220P-B COLLIMATION TUBE	
APPROVAL	JC	20/OCT/22	MATERIAL	SEE TABLE
<small>COPYRIGHT © 2022 BY THORLABS</small>			ITEM #	APPROX WEIGHT
<small>VALUES IN PARENTHESIS ARE CALCULATED AND MAY CONTAIN ROUND-OFF ERRORS</small>			LT220P-B	8.2 g

NUMBER	PART	MATERIAL
①	O-RING (PROVIDES FRICTION FIT)	RUBBER
②	f=11.0 mm NA=0.26 AR 650-1050 nm MOUNTED ASPHERIC LENS	D-K59
③	COLLIMATION TUBE	6061-T6 ALUMINUM
④	ADAPTER FOR 5.6 mm DIODE	6061-T6 ALUMINUM
⑤	5.6 mm LASER DIODE (SOLD SEPARATELY)	-
⑥	RETAINING RING FOR 5.6 mm DIODE	6061-T6 ALUMINUM



NOTES/SPECIFICATIONS:

- LENS CELL HAS ± 1.0 mm ADJUSTMENT RANGE FROM POSITION SHOWN, WHICH WAS DESIGNED FOR TOSHIBA STANDARD 9 mm LASER PACKAGE
- DESIGN REQUIRES THE EMITTING SURFACE OF THE LASER TO BE BETWEEN 1.7-3.2 mm FROM THE $\phi 9$ mm MOUNTING FLANGE OF THE LASER
- USE THORLABS SPANNER WRENCH SPW301 FOR RETAINING RINGS
- PRINCIPAL PLANE OF LENS IS NOMINALLY 13.4 mm FROM LASER MOUNTING SURFACE

SHEET 2 OF 2: FOR 9.0 mm LASER DIODE CONFIGURATION SEE SHEET 1

FOR INFORMATION ONLY
NOT FOR MANUFACTURING PURPOSES

DRAWING PROJECTION			THORLABS www.thorlabs.com	
NAME	DATE	LT220P-B COLLIMATION TUBE		
DRAWN	KMC	18/SEP/17	MATERIAL	
APPROVAL	JC	20/OCT/22	SEE TABLE	REV F
COPYRIGHT © 2022 BY THORLABS				
VALUES IN PARENTHESIS ARE CALCULATED AND MAY CONTAIN ROUND OFF ERRORS			ITEM #	APPROX WEIGHT
			LT220P-B	8.2 g