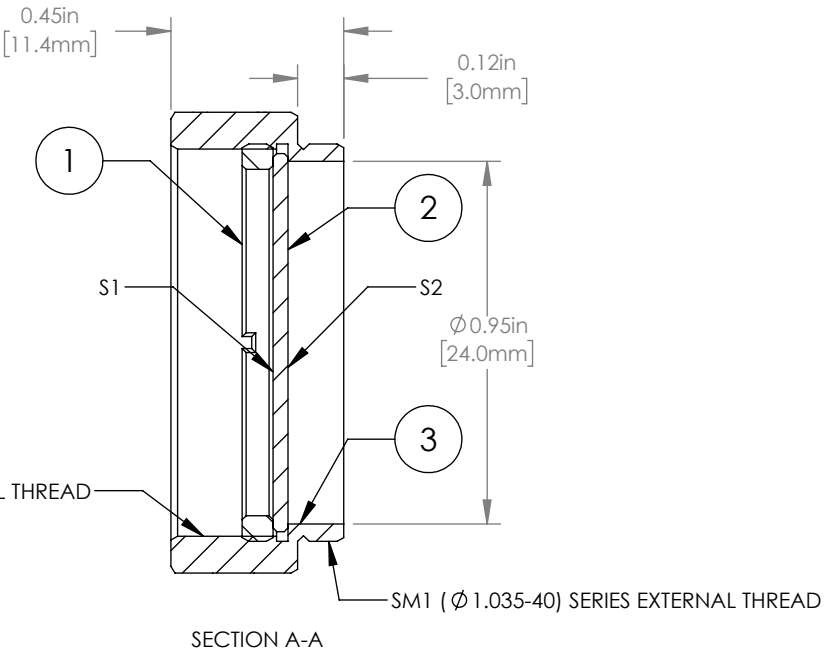
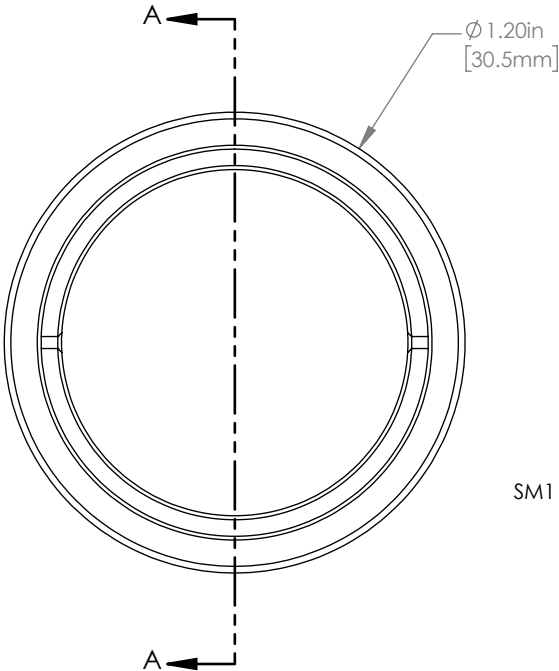


ITEM	PART DESCRIPTION	MATERIAL
①	SM1RR	ANODIZED ALUMINUM
②	NDUV20B	UV FUSED SILICA
③	ENGRAVED HOUSING	ANODIZED ALUMINUM



NOTES/SPECIFICATIONS:

- CLEAR APERTURE: > Ø 22.5 mm
- SURFACE QUALITY (S1, S2): 40-20 SCRATCH-DIG
- SURFACE FLATNESS (S1, S2): <2λ AT 633 nm
- PARALLELISM: <30 arcsec
- COATING(S1): NICKEL
OPTICAL DENSITY: 2.0 ±5.0% AT 300 nm
NOMINAL TRANSMISSION: 1.0%
- OPTIMIZED WAVELENGTH RANGE: 200 - 400 nm
- USEABLE WAVELENGTH RANGE: 200 - 1200 nm

FOR INFORMATION ONLY
NOT FOR MANUFACTURING PURPOSES

DRAWING PROJECTION			<div>THORLABS</div> <div>www.thorlabs.com</div>	
	NAME	DATE		
DRAWN	JAC	18/DEC/18	MOUNTED Ø 25.0 mm REFLECTIVE ND FILTER, OD: 2.0	
APPROVAL	DD	31/OCT/19	MATERIAL	
COPYRIGHT © 2020 BY THORLABS			SEE TABLE	
VALUES IN PARENTHESIS ARE CALCULATED AND MAY CONTAIN ROUND OFF ERRORS			ITEM #	APPROX WEIGHT
			NDUV20A	9 g

REV
D