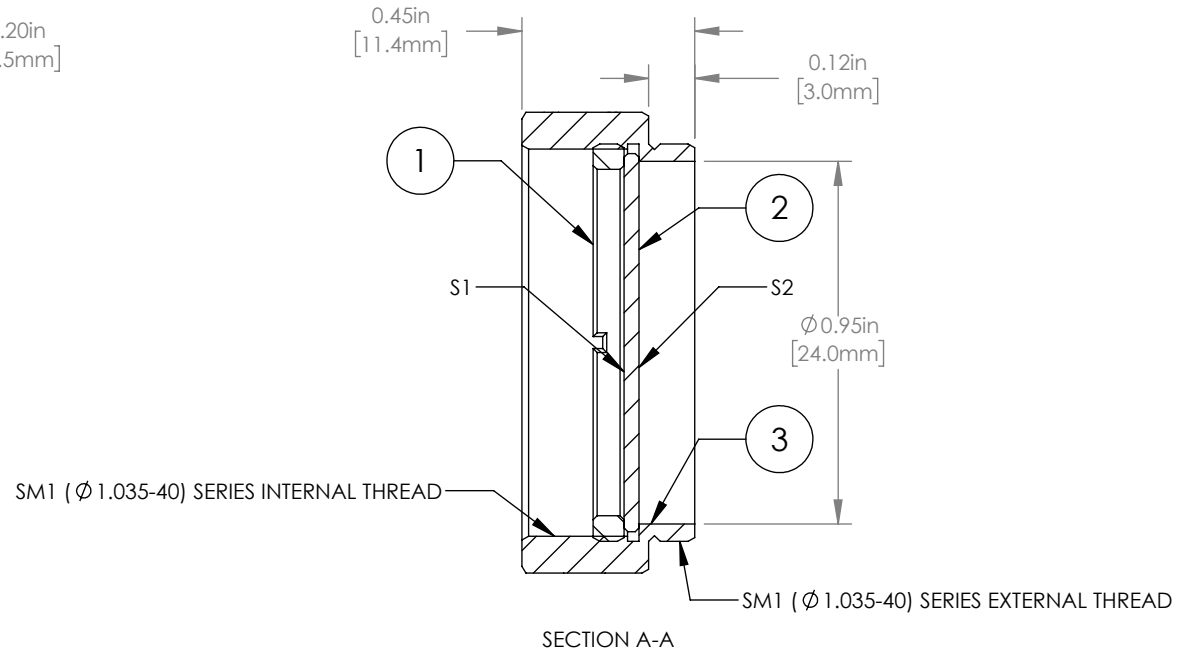
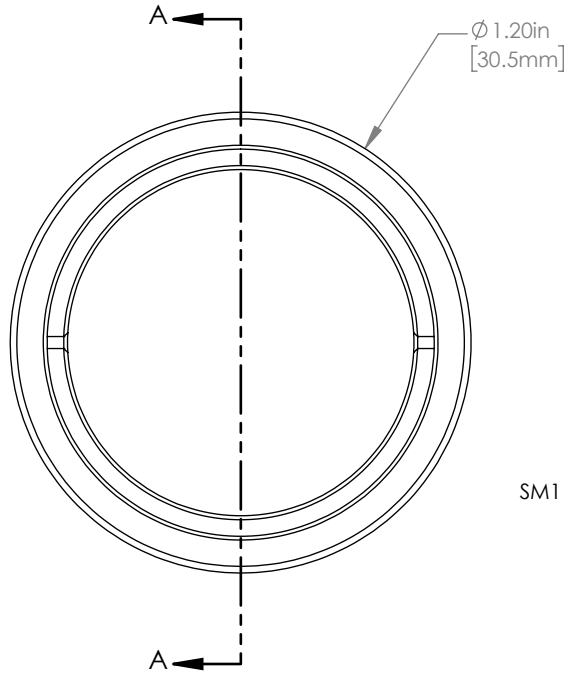


ITEM	PART DESCRIPTION	MATERIAL
①	SM1RR	ANODIZED ALUMINUM
②	NDUV30B	UV FUSED SILICA
③	ENGRAVED HOUSING	ANODIZED ALUMINUM



NOTES/SPECIFICATIONS:

1. CLEAR APERTURE: > Ø 22.5 mm
2. SURFACE QUALITY (S1, S2): 40-20 SCRATCH-DIG
3. SURFACE FLATNESS (S1, S2): <2λ AT 633 nm
4. PARALLELISM: <30 arcsec
5. COATING(S1): NICKEL  
OPTICAL DENSITY: 3.0 ± 5.0% AT 300 nm  
NOMINAL TRANSMISSION: 0.1%
6. OPTIMIZED WAVELENGTH RANGE: 200 - 400 nm
7. USEABLE WAVELENGTH RANGE: 200 - 1200 nm

FOR INFORMATION ONLY  
NOT FOR MANUFACTURING PURPOSES

DRAWING PROJECTION			 <a href="http://www.thorlabs.com">www.thorlabs.com</a> <b>MOUNTED Ø 25.0 mm REFLECTIVE ND FILTER, OD: 3.0</b>	
NAME	DATE			
DRAWN	JAC	18/DEC/18	MATERIAL <b>SEE TABLE</b>	
APPROVAL	DD	31/OCT/19		
COPYRIGHT © 2020 BY THORLABS VALUES IN PARENTHESIS ARE CALCULATED AND MAY CONTAIN ROUND OFF ERRORS			ITEM #	APPROX WEIGHT
			NDUV30A	9 g

REV D