

PM100 Digital Power Meter Console

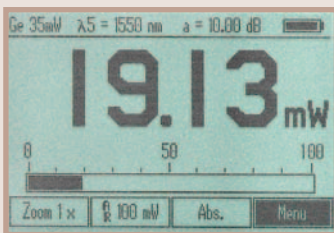
Features

- Multifunctional 240 x 160 Pixel Graphics Display
- 4-Digit Power Readout
- Interchangeable Photodiode and Thermal Sensor Heads
- NIST Traceable Calibration
- RS-232 Interface for Remote Control (Software With GUI and LabVIEW Drivers Included)
- Analog Output Monitor Voltage
- Rechargeable Long-Life NiMH Battery
- Kick-Stand for Easy Viewing Angle

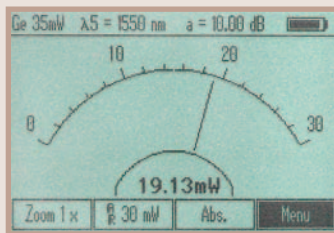


- Detectors
- Power Meters
- CCD Cameras
- Optical Chopper
- Beam Profilers & Extensions Sets
- Spectrometers
- Temperature Controller & Shutter
- Filter Wheels

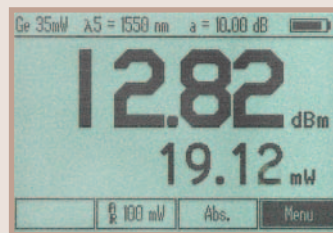
Display Screens for PM100 Console



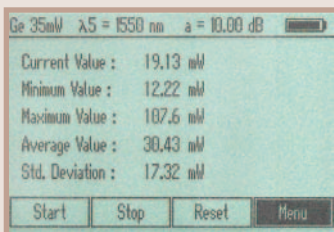
Large Display w/ Analog Bar Graph



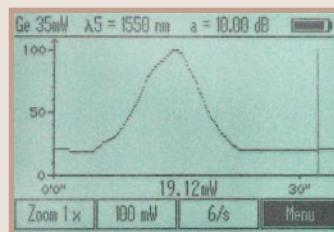
Analog Needle for Peak Detection



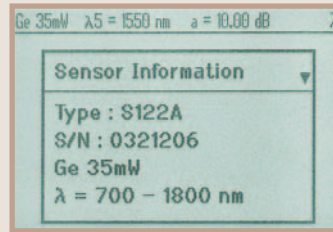
Dual Display in dBm and mW



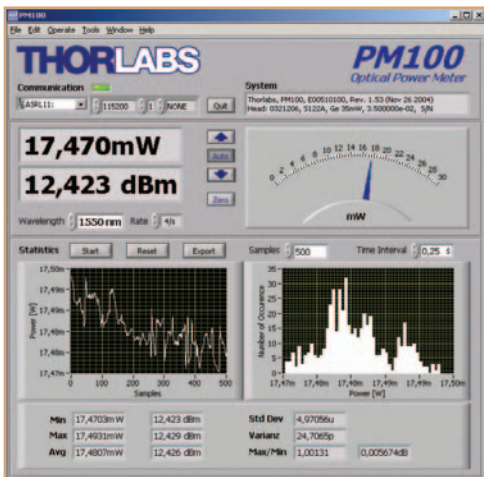
Statistic Function Display



Power Versus Time Display



Sensor Information



The console has a built-in RS-232 interface and comes with a comprehensive software package. It contains a complete set of drivers (LabVIEW™, LabWINDOWS™/CVI) and the application software with Graphical User Interface (GUI). The application software enables full remote control of the unit and allows the user to view, acquire, and store the measurement data on the PC.

Interface Cable USB to Serial

The cable allows electronic to access the PM100 and PM30 power meters via a USB interface. The cable has a sub-D connector that includes the USB to serial converter on one end and a USB connector on the other.



ITEM#	\$	£	€	RMB	DESCRIPTION
CABUSR	\$ 32.50	£ 20.50	€ 30.20	¥ 310.40	USB to RS-232 Converter

ITEM#	\$	£	€	RMB	DESCRIPTION
PM100	\$ 775.00	£ 488.30	€ 720.80	¥ 7,401.30	Digital Power Meter Console Only
PMBAT	\$ 69.60	£ 43.80	€ 64.70	¥ 664.70	3.6V Replacement Battery Pack for PM100
PMP59	\$ 30.00	£ 18.90	€ 27.90	¥ 286.50	Replacement Power Supply for PM100