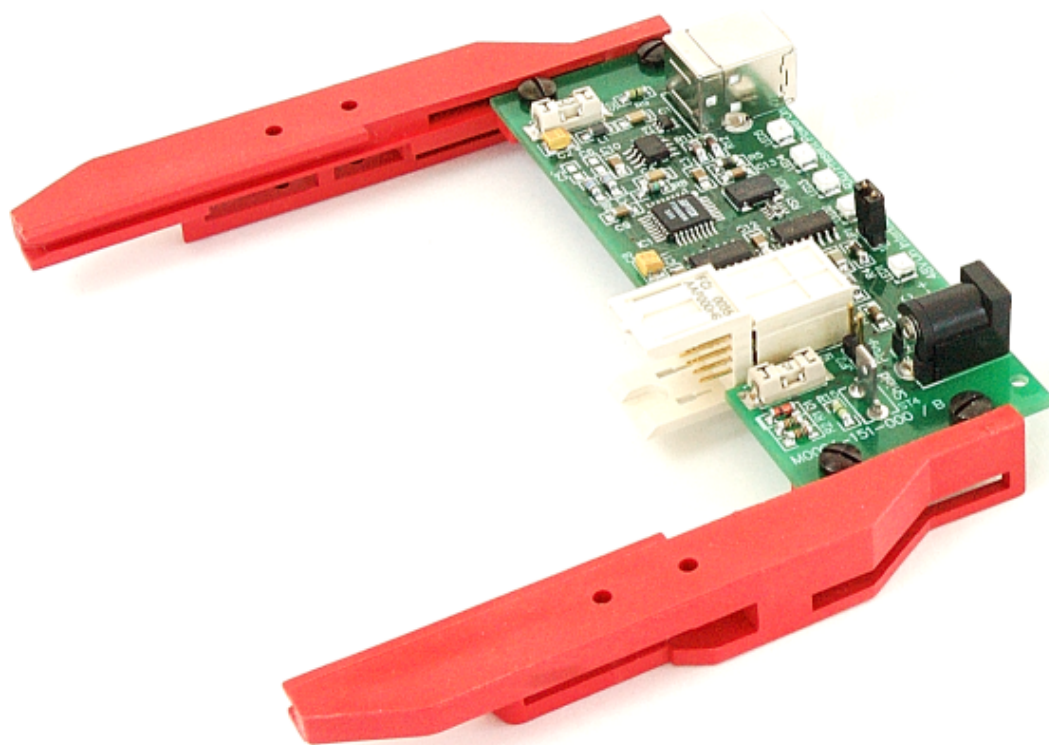




Thorlabs Instrumentation

# TXP5001AD Operation Manual



2017

---

Version: 3.1.5  
Date: 31-Jan-2017

Item No.: M0009-510-100

# Contents

<b>Foreword</b>	<b>2</b>
<b>1 General Information</b>	<b>3</b>
1.1 Safety	3
1.2 Ordering Codes and Accessories	5
1.3 Requirements	5
1.3.1 Hardware Requirements	5
1.3.2 Software Requirements	5
<b>2 Getting Started</b>	<b>6</b>
2.1 Parts List	6
2.2 Installing Software	6
<b>3 Operating Elements TXP5001AD</b>	<b>10</b>
<b>4 First Steps</b>	<b>11</b>
4.1 USB driver installation	11
4.2 TXP Server configuration	12
4.3 Gateway Mode	14
<b>5 Operating Instruction</b>	<b>17</b>
5.1 Installing and Removing Modules	17
<b>6 Maintenance and Service</b>	<b>18</b>
6.1 Replacing the On-board Fuses	19
6.2 Troubleshooting	20
<b>7 Appendix</b>	<b>22</b>
7.1 Technical Data	22
7.2 Certifications and Compliances	23
7.3 Warranty	24
7.4 Copyright and Exclusion of Reliability	25
7.5 Thorlabs 'End of Life' Policy	26
7.6 Thorlabs Worldwide Contacts	27

---

We aim to develop and produce the best solution for your application in the field of optical measurement technique. To help us to live up to your expectations and improve our products permanently we need your ideas and suggestions. Therefore, please let us know about possible criticism or ideas. We and our international partners are looking forward to hearing from you.

*Thorlabs GmbH*

## **Warning**

Sections marked by this symbol explain dangers that might result in personal injury or death. Always read the associated information carefully, before performing the indicated procedure.

## **Attention**

Paragraphs preceded by this symbol explain hazards that could damage the instrument and the connected equipment or may cause loss of data.

## **Note**

This manual also contains "NOTES" and "HINTS" written in this form.

Please read these advices carefully!

# 1 General Information

The TXP5001AD single module adapter is designed to accommodate one TXP module. The module is controlled by an external PC, connected via the USB interface of the TXP5001AD. It has a wide range power supply compatible with line voltages between 100...240VAC, 50-60Hz.

The TXP software allows to use the control PC as a gateway to a local area network so that the TXP module can then be controlled remotely via the LAN and the local USB control PC.

- Very compact module adapter
- Hosts any TXP Series module
- Intelligent modules - memory / processor capacity where needed (real time apps)
- Programming Interface  
USB interface with LabVIEW® / LabWindows/CVI® and C drivers  
Enhanced macro function capabilities
- Remote control or support via USB connection
- Ethernet remote control possible via a gateway PC

## 1.1 Safety

### **Attention**

**All statements regarding safety of operation and technical data in this instruction manual will only apply when the unit is operated correctly as it was designed for.**

**Prior to applying power to the TXP5001AD, make sure that the protective conductor of the 3 conductor mains power cord is correctly connected to the protective earth ground contact of the socket outlet! Improper grounding can cause electric shock with damages to your health or even death!**

**All modules must only be operated with proper shielded connection cables.**

**The TXP5001AD must not be operated in explosion endangered environments!**

**Do not remove covers! Do not obstruct the air ventilation slots in the housing!**

**Do not open the cabinet, there are no parts serviceable by the operator inside!**

**Refer servicing to qualified personnel!**

**Only with written consent from *Thorlabs GmbH* may changes to single components be made or components not supplied by *Thorlabs GmbH* be used.**

**This precision device is only serviceable if properly packed into the complete original packaging. If necessary, ask for a replacement package prior to return.**

### **Attention**

**The following statement applies to the products covered in this manual, unless otherwise specified herein. The statement for other products will appear in the accompanying documentation.**

**This equipment has been tested and found to comply with the limits for a Class A digital device, pursuant to part 15 of the FCC Rules and meets all requirements of the Canadian Interference-Causing Equipment Standard ICES-003 for digital apparatus. These limits are designed to provide reasonable protection against harmful interference when the equipment is operated in a commercial environment. This equipment generates, uses, and can radiate radio frequency energy and, if not installed and used in accordance with the instruction manual, may cause harmful interference to radio communications. Operation of this equipment in a residential area is likely to cause harmful interference in which case the user will be required to correct the interference at his own expense.**

**Thorlabs GmbH is not responsible for any radio television interference caused by modifications of this equipment or the substitution or attachment of connecting cables and equipment other than those specified by Thorlabs GmbH. The correction of interference caused by such unauthorized modification, substitution or attachment will be the responsibility of the user.**

**The use of shielded I/O cables is required when connecting this equipment to any and all optional peripheral or host devices. Failure to do so may violate FCC and ICES rules.**

**Attention**

**Mobile telephones, cellular phones or other radio transmitters are not to be used within the range of three meters of this unit since the electromagnetic field intensity may then exceed the maximum allowed disturbance values according to IEC 61326-1.**

**This product has been tested and found to comply with the limits according to IEC 61326-1 for using connection cables shorter than 3 meters (9.8 feet).**

## 1.2 Ordering Codes and Accessories

Ordering code:

TXP5001AD            Single USB T&M TXP module Adapter

## 1.3 Requirements

These are the requirements to the PC intended to be used for remote operation of the TXP5001AD.

### 1.3.1 Hardware Requirements

CPU:            1 GHz or higher

RAM:           256 MB

Graphic card   Min. 32 MB memory

Hard disc      Min 100 MB free storage space

Interface      Free USB2.0 port, USB cable according the USB 2.0 specification

### 1.3.2 Software Requirements

The TXP5001AD software is compatible with the following operating systems:

- Windows® 7 (32-bit, 64-bit)
- Windows® 8.x (32-bit, 64-bit)

For operation of the TXP5001AD, also an NI-VISA (version 5.4.1 or higher) is required. This NI-VISA engines comes with the Thorlabs GmbH TXP5001AD installation software package, but can be downloaded also from National Instruments' website [www.ni.com](http://www.ni.com).

## 2 Getting Started

### 2.1 Parts List

Inspect the shipping container for damage.

If the shipping container seems to be damaged, keep it until you have inspected the contents and you have inspected the TXP5001AD mechanically and electrically.

Verify that you have received the following items within the package:

#### TXP5001AD

1. Single module adapter with USB Control
2. Cable USB2.0 A-B (TXPCABUSB)
3. Operation Manual
4. Desktop Power Supply and Power Cord

### 2.2 Installing Software

#### Note

**Do not connect the TXP5001AD to the PC prior to software installation!**

#### Attention

**Exit all running applications on your PC as the installer may require a reboot of your PC during installation!**

The TXP software package contains:

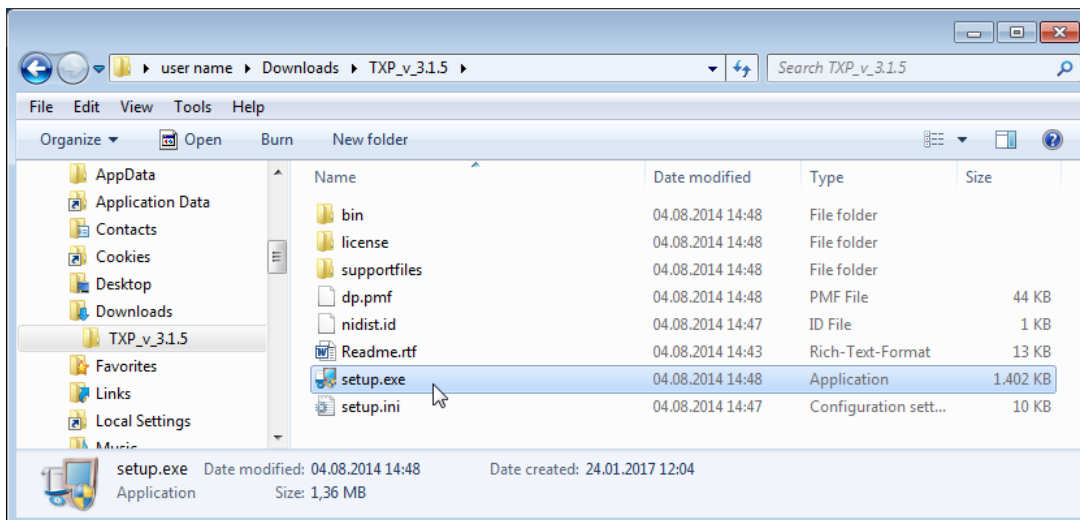
- NI VISA Runtime 5.4.1
- USB Drivers for TXP5001AD and TXP5004 and module slots
- Control software for TXP modules
- TXP Administration Tools

Below the software installation to a Windows 7® 64 bit operating system is described.

Download the ZIP archive from our website:

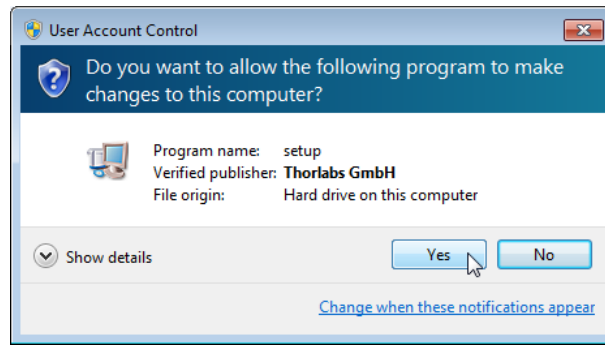
[https://www.thorlabs.com/software\\_pages/ViewSoftwarePage.cfm?Code=TXP5000](https://www.thorlabs.com/software_pages/ViewSoftwarePage.cfm?Code=TXP5000)

and unpack the archive. Then execute the setup.exe:

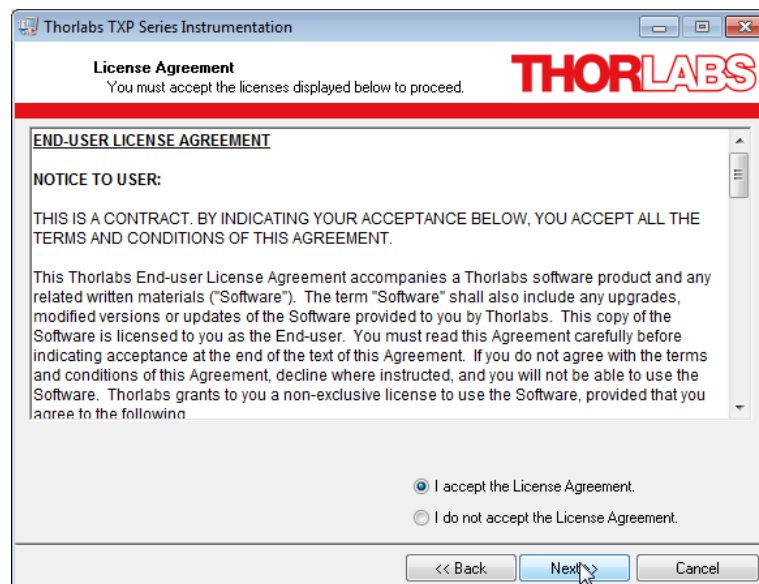
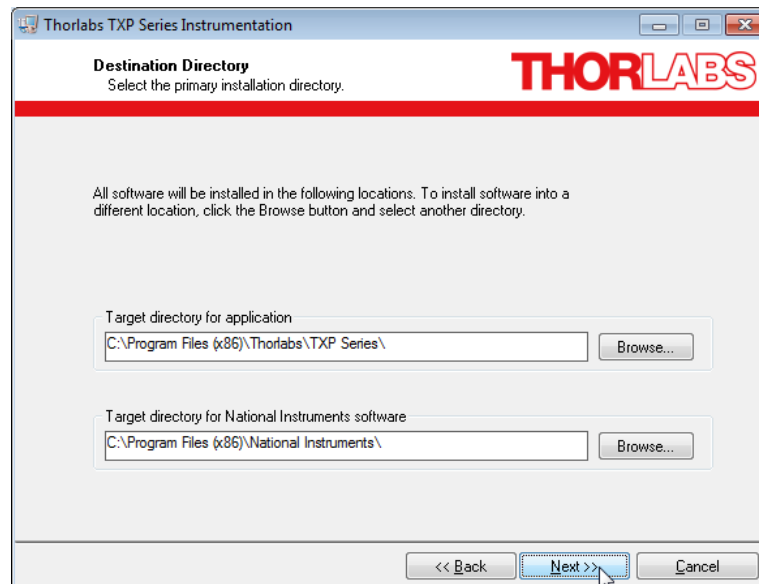


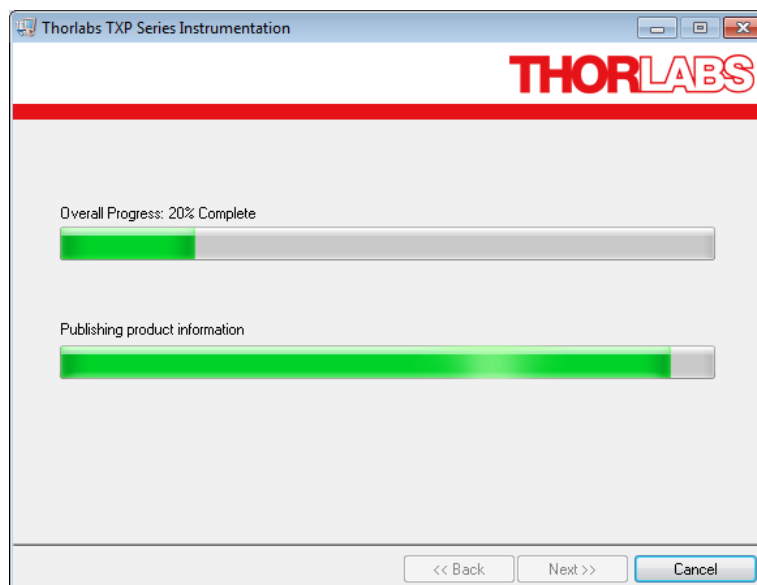
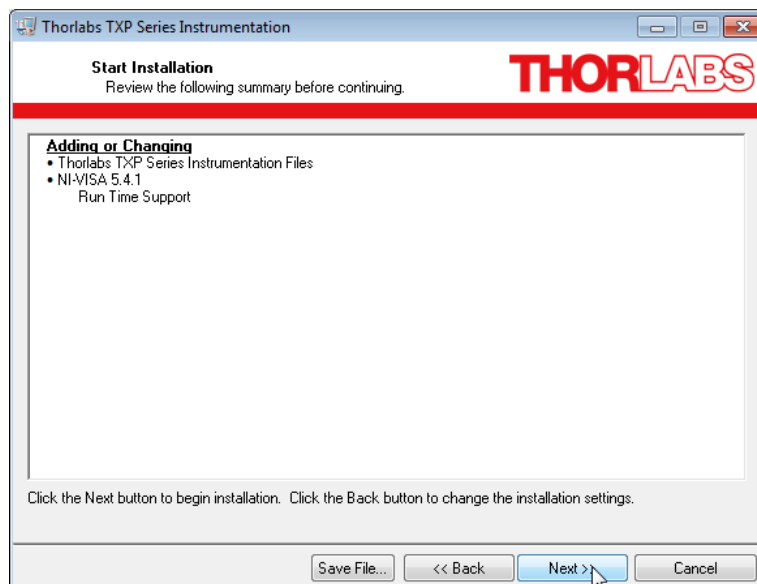
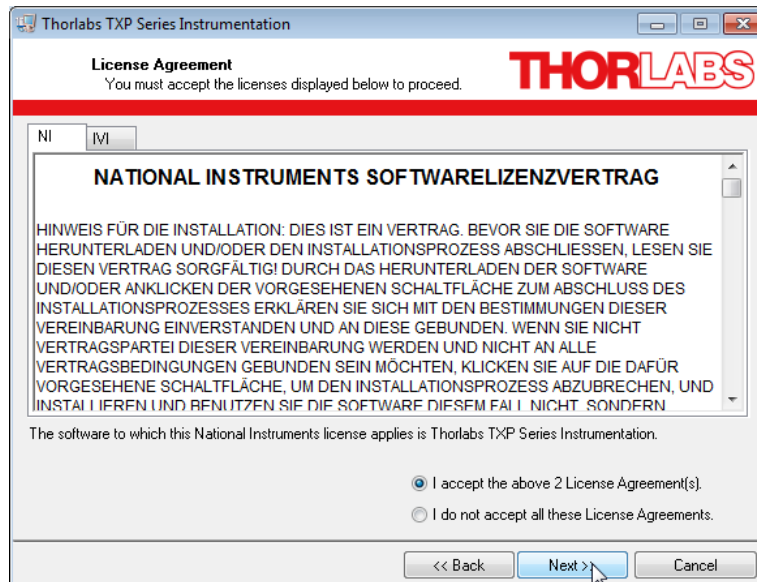
A user account control warning comes up:

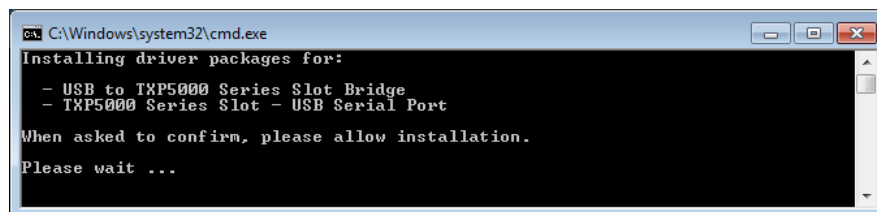
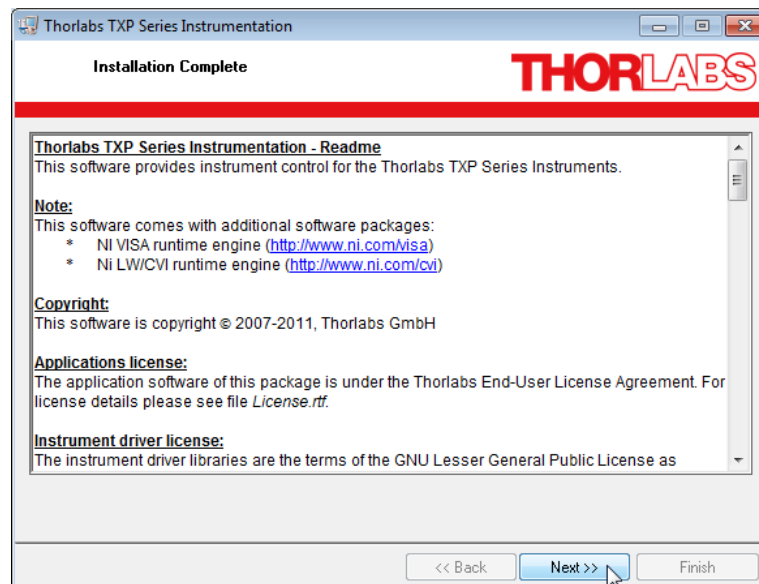




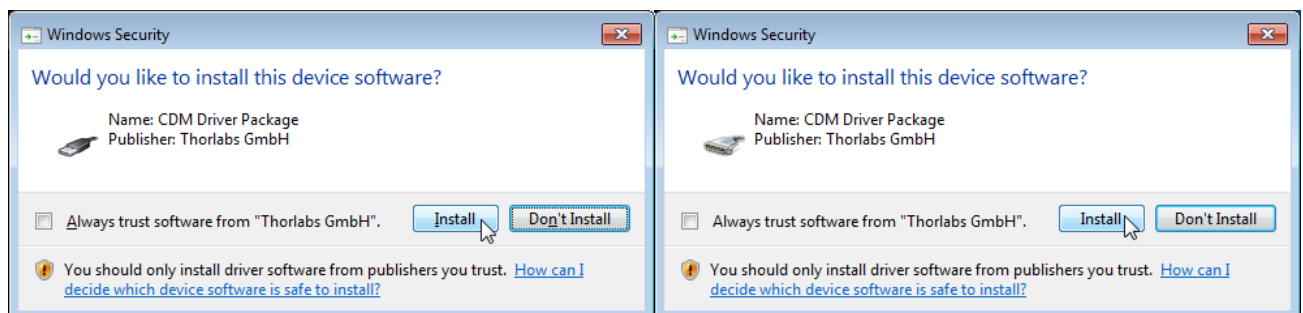
Allow the installation. Then follow the the screenshots below:



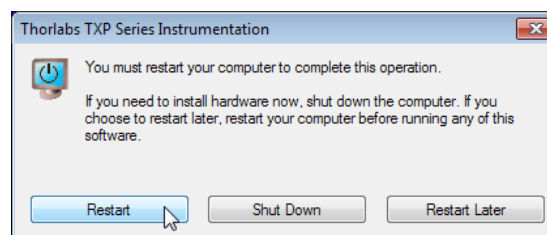




This Windows Security message appears twice.



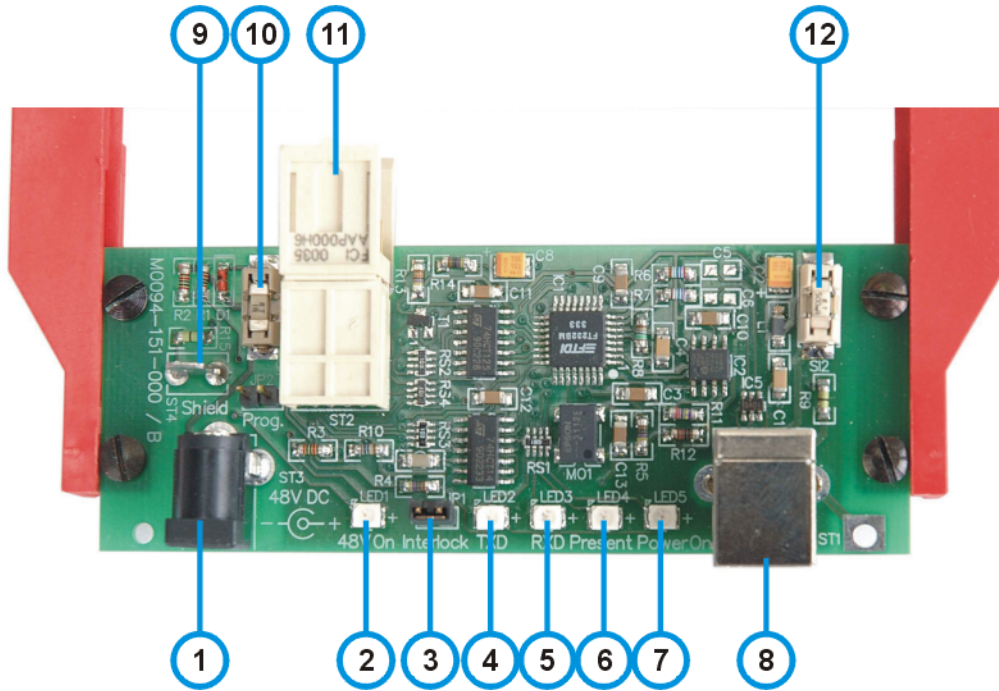
You may be requested to restart your computer upon finishing software installation.



### Note

If you are requested to restart your computer, please do so. Otherwise, the TXP software won't operate properly.

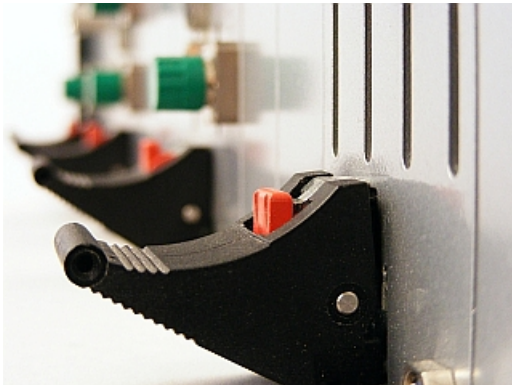
### 3 Operating Elements TXP5001AD



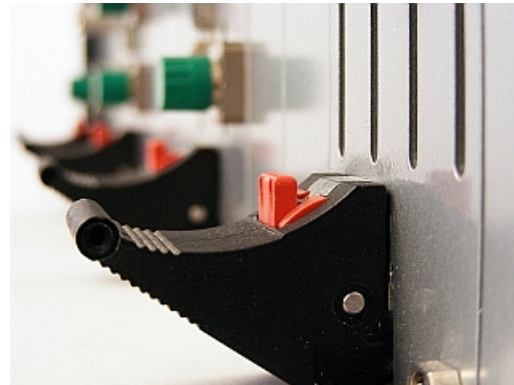
- 1 48 V power supply connector
- 2 LED "48 V ON"
- 3 Interlock. These contacts must be closed if using TXP modules with interlock sensor.
- 4 LED "TXD". Indicates data transmission to the PC.
- 5 LED "RXD". Indicates data receipt from the PC.
- 6 LED "Present". Indicates that the inserted TXP module is enabled (ejector handle)
- 7 LED "Power ON". Indicates that the inserted TXP module is powered up.
- 8 USB-B connector for connection to the control PC
- 9 Shield. Grounding pin of the TXP5001AD (system ground).
- 10 Fuse 1 A for the 48 V power supply
- 11 Multi-pin connector for the TXP module
- 12 Fuse 0.5 A for the USB supply

## 4 First Steps

- Insert your TXP module(s) into the TXP5001AD. Please make sure, that the ejector handle is pushed up against the stop - a click can be heard and the red locking lever is in full upper position:



*In this position the TXP module is disabled!*



*Correct position*

- Connect the power supply to your TXP5001AD. The green LED "48 V ON" must light up.

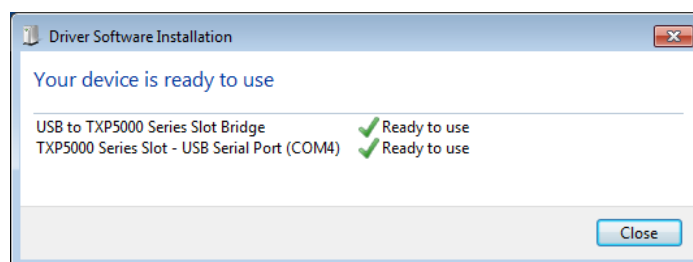
### 4.1 USB driver installation

Connect the TXP5001AD to your computer using the USB cable provided with the unit.

The operating system recognizes the connected polarimeter and starts the driver installation.

By default, the operating system is starting to search "Windows Update", which may take a while. In order to skip the Windows Update search, click to the Driver Installation info dialog on the desktop. The Driver Installation dialog box appears; click to "Skip obtaining driver software from Windows Update".

The drivers for "USB to TXP5000 Series Slot Bridges" and "TXP5000 Series Slot - USB Serial Ports" will be installed automatically:




## 4.2 TXP Server configuration

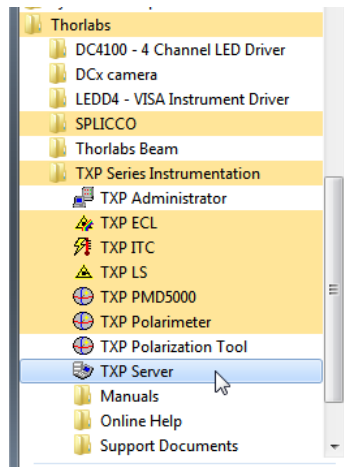
### Attention

For a proper operation of the TXP Server, the Windows Firewall should be switched off. Depending on the security settings of the control PC, this might be impossible even if you have administrator privileges. In this case please be aware of the following Windows Security Alert:

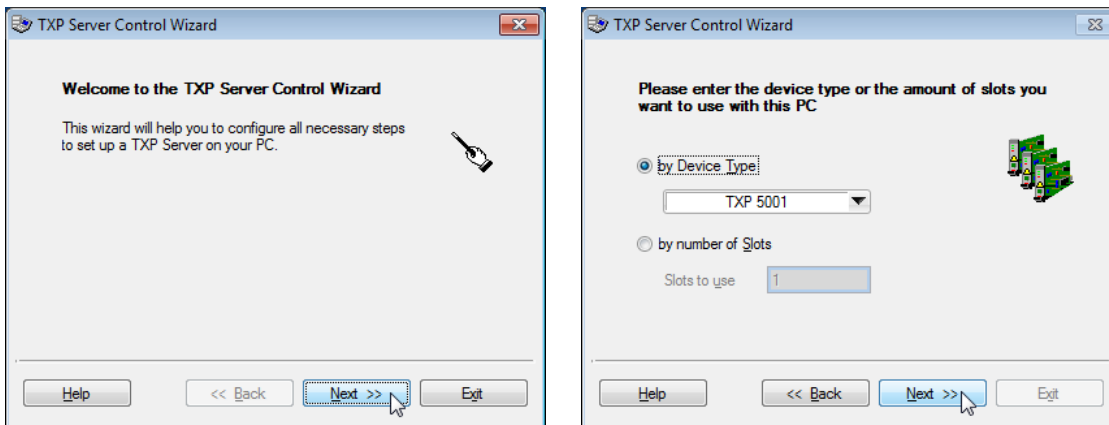


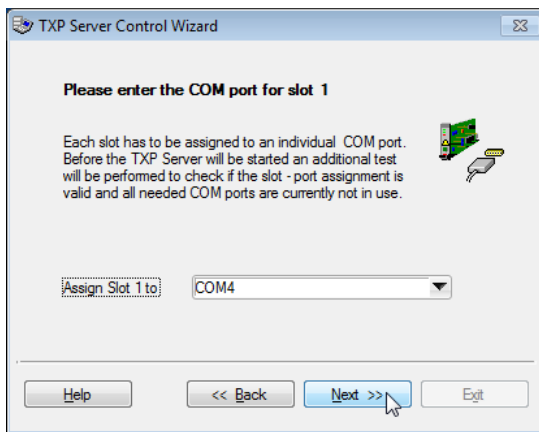
The firewall by default blocks the **txprmd.exe**, which is the executable of the TXP Server. Please allow the **txprmd.exe** access, otherwise the TXP Server cannot be started.

As a next step, the TXP Server must be configured. Therefore, start TXP Server from the desktop icon (  ) or from the Windows Start button:

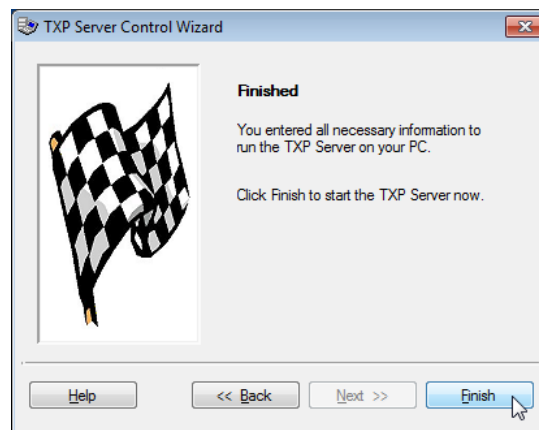


At first use of the TXP Server, a configuration wizard is started. It is strongly recommended not to change the settings in the next appearing dialog boxes - just click "Next" to continue:

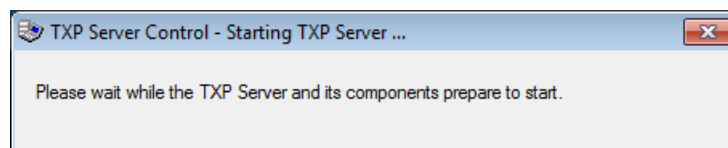




**Note** For the **Gateway Mode** please see next section.



Click "Finish" to start the TXP Server software.



In the task bar, the TXP Server icon  appears, the TXP Server is running. The TXP5001AD is ready for operation now.

**Note**


Above procedure needs to be executed only once. Further connections of the TXP5001AD to the PC will recall these setting, except other applications were installed, requiring COM ports or a different TXP5001AD was used.

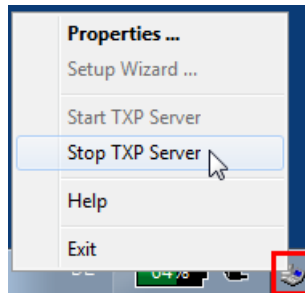
## 4.3 Gateway Mode

The PC that controls the TXP5001AD via USB, can serve as a gateway to a local area network. This way, any other PC logged on to the same LAN can take over the control.

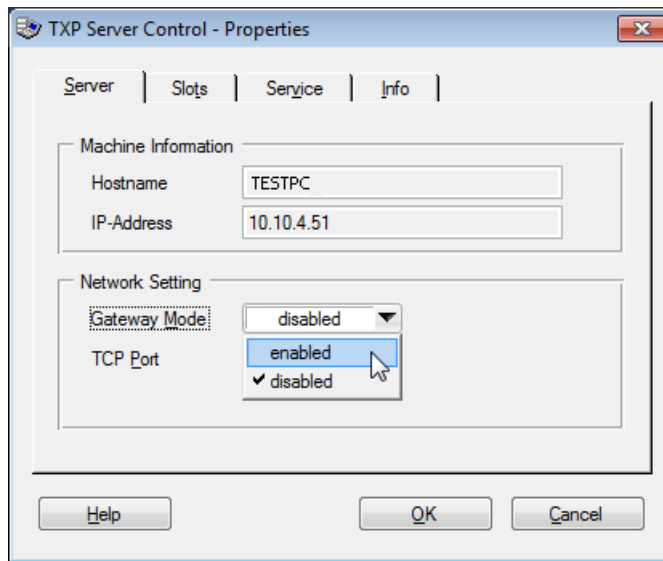
Therefore,

- the PC that controls the TXP5001AD via USB, must be logged on the the LAN;
- the 2nd PC must be registered in the same network domain as the USB control PC (For details on network registering and logging in, please contact your administrator)
- the TXP software package is installed to the remote PC as well.

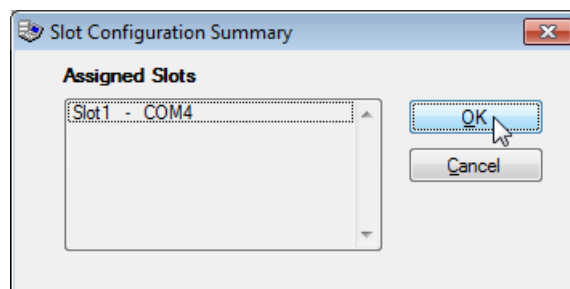
The gateway mode can be enabled only if the the TXP Server is stopped. The icon  indicates this condition. Right click to this icon and select "Properties":





The TXP Server Control panel opens



Select "enabled" and remember the host name and/or IP address. Then click "OK". A summary of the assigned COM ports appears, click OK to continue:



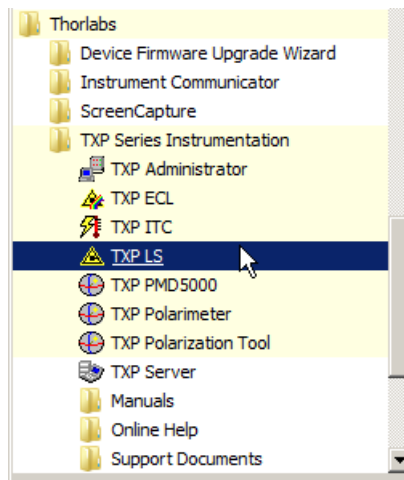
Start the TXP Server and wait, until it's icon in the task bar changes from  to . The gateway is now enabled and active. From the remote PC now a TXP module GUI can be started.



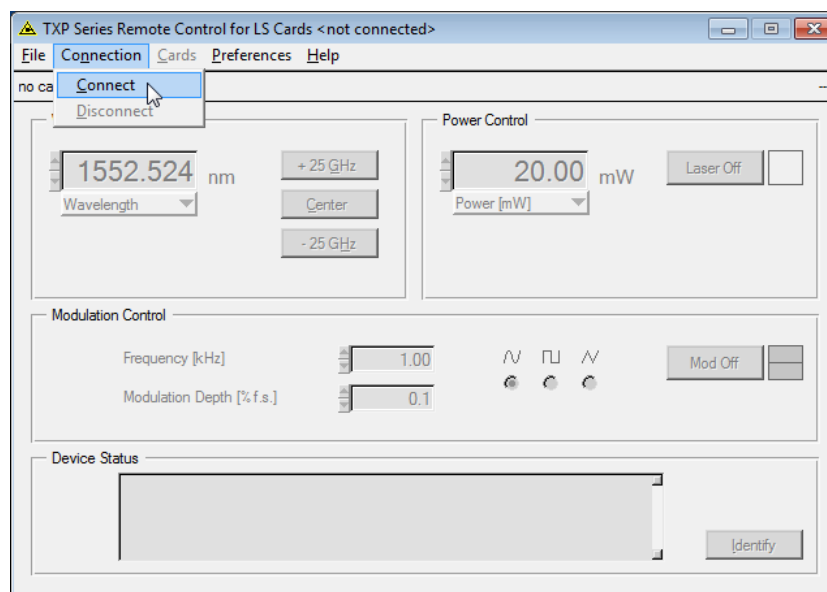
**Example:**

A TXP LS5 laser source is connected via USB to the control PC; the TXP server is running in gateway mode, as shown in the instruction above.

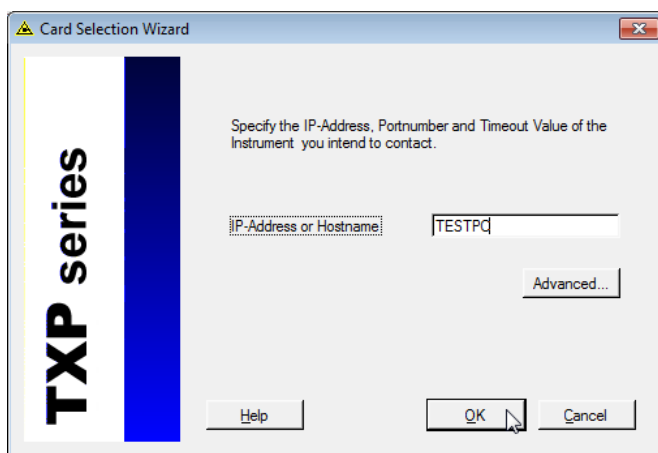
Select from Windows button -> Programs the TXP Polarimeter Software:



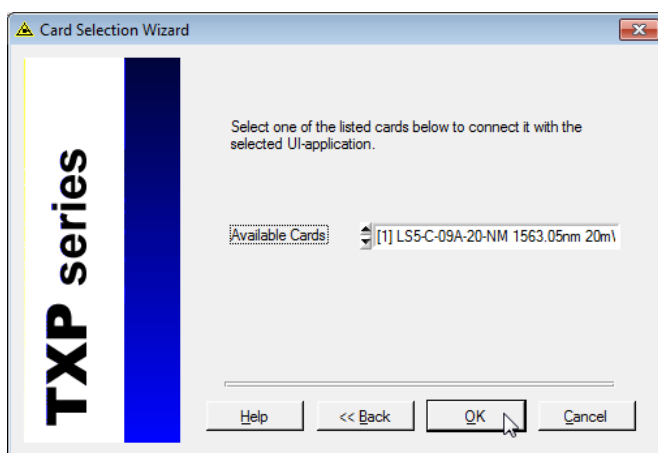
The TXP LS GUI starts up; click to "Connect" button:



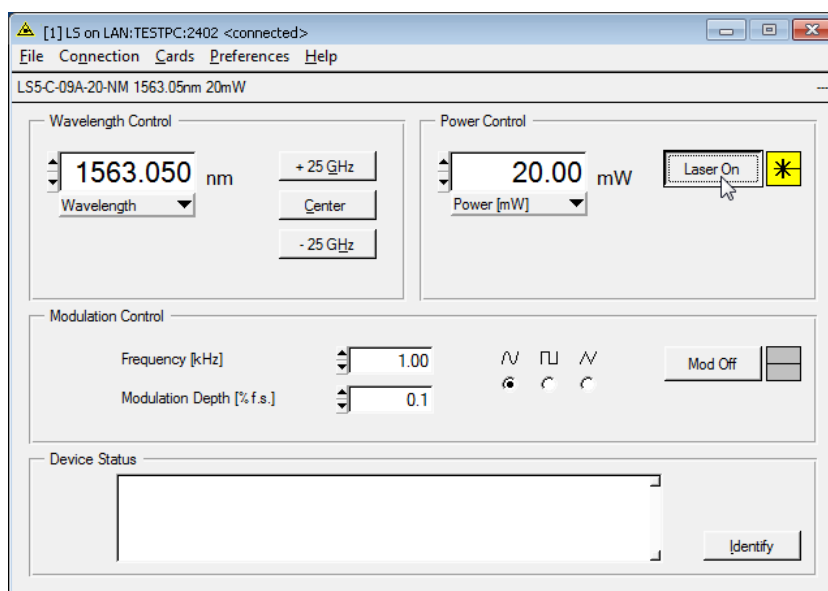
and enter the host name (or the IP address) of the USB control PC into the appropriate box and click **OK**:



Then select the desired LS5 module and click **OK**:



The TXP LS GUI connects to the module and is ready for use:



## 5 Operating Instruction

### 5.1 Installing and Removing Modules


The TXP5001AD and TXP modules are 'Hot-Swappable'. This means that the modules can be detached, exchanged or installed during normal operation of the TXP5001AD.

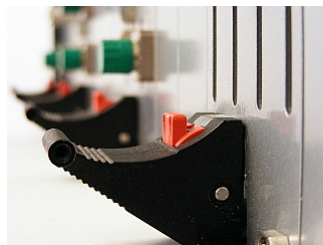
- Push the red button of the ejector handle and flip down the black ejector handle. This pulls out the module from its internal plug.

You can now remove the module.

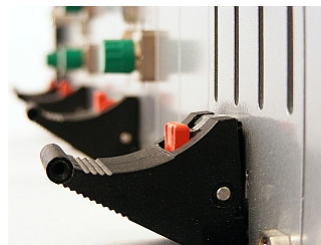
Detaching the module leads to an automatic disconnect, if the module was connected and operated by the control PC.

Make sure, that

- the TXP5001AD with inserted electronics module is switched on and connected to the PC via a USB2.0 cable.
- the TXP Server is started and running (see  icon in the task bar).
- the ejector handle of the inserted module is in the very upright position:



**Yes!**



**No!**

Now, the modules can be operated. Please see the individual TXP module manuals for operation details.

## 6 Maintenance and Service

Protect the TXP5001AD from adverse weather conditions. The TXP5001AD is not water resistant.

### **Attention**

**To avoid damage to the instrument, do not expose it to spray, liquids or solvents!**

The unit does not need a regular maintenance by the user. It does not contain any modules and/or components that could be repaired by the user himself. If a malfunction occurs, please contact [Thorlabs GmbH](#) for return instructions.

Do not remove covers!

Protect the TXP5001AD from adverse weather conditions. The TXP5001AD is not water resistant.

### **Attention**

**To avoid damage to the instrument, do not expose it to spray, liquids or solvents!**

The unit does not need a regular maintenance by the user. It does not contain any modules and/or components that could be repaired by the user himself. If a malfunction occurs, please contact [Thorlabs](#) for return instructions.

Do not remove covers!

### **Cleaning**

The unit can be cleaned with a cloth dampened with water. You can use a mild 75% Isopropyl Alcohol solution for more efficient cleaning.

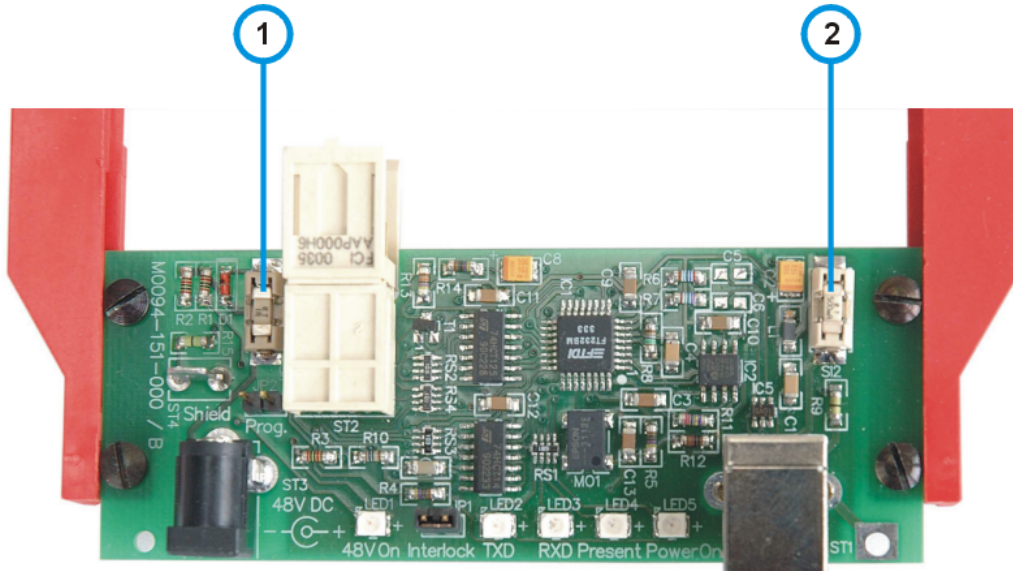
## 6.1 Replacing the On-board Fuses

If the on-board fuses are blown due to line disturbance or other influences from the outside, they can be replaced easily.

### Attention

To avoid fire hazard only the appropriate fuses must be used!

- Remove the power supply and the inserted module from the TXP5001AD.
- Replace the blown fuse using tweezers or a small gripper.






Fuse types:

- No. 1 - fuse for 48 V power supply: **Littlefuse NANO2™ Slo-Blo™ R452 001** (1 A, slow response)
- No. 2 - fuse for 5 V USB supply: **Littlefuse NANO2™ Slo-Blo™ R452 500** (500 mA, slow response)

After fuse replacement, reinstall the module, switch on the TXP5001AD and check the correct function. If the fuse(s) open(s) again there may be a fault on the corresponding module. Please contact [Thorlabs](#).

## 6.2 Troubleshooting

- **The TXP5001AD does not work at all; the LED ON does not light up**
  - Check for proper power supply connection. The LED "48 V ON" must light up.
  - Check if the on-board fuse is blown. See [Replacing the On-board Fuses](#).
- **The TXP5001AD works, but not the TXP module**
  - Is the module inserted correctly and has the ejector handle snapped into its position? Insert the module in the desired slot, flip the black ejector handle upwards until the red locking button clicks out and tighten all mounting screws properly.
  - Check if the on-board fuse is blown. See [Replacing the On-board Fuses](#).
  - See the individual manual of the module for further troubleshooting.
- **The TXP5001AD does not respond to the connected computer**
  - Check the TXP5001AD connection to the PC (standard USB A-B cable) Check the used cable, try another USB port.
  - Is the software installed properly?  
See section [Installing Software](#).
  - Is the USB port activated and set to USB-2 standard?  
Check the system settings of this USB port in the Device Manager.
  - Is the TXP Server started?  
Check for the "TXP Server Control" icon in the task bar:
    - If there is no icon  or , start the TXP Server from the desktop icon or from the Start menu.
    - If there is the icon , right click to this icon and select "Start TXP Server"
  - The TXP Server cannot be started.  
Check if the Windows Firewall is active. See [TXP Server configuration](#).
- **The TXP Server starts and reports "There is no COM port available"**
  - Did you connect your TXP5001AD to a different USB port than before or are you using a different TXP5001AD?  
The COM ports are assigned to slots with a specific name on a specific USB port. If you change either the USB port or the TXP, the system needs to assign new COM ports to the found new hardware.
    - Run the TXP Server Control Wizard anew.
    - If this does not resolve the problem, try to disconnect existing COM ports from earlier assigned USB ports/TXP modules:  
Right-click on the server control symbol in the system tray and select 'Properties'. The TAB 'Slots' shows you the available COM ports and TXP slots. Mark the slots which are not needed at the moment and click 'Remove'. The COM assignment to this slot is released. With 'Add' you can now assign the available COM ports to your new slots.
  - You might have connected the TXP5001AD via USB to the control PC prior to install software.  
In this case, the operating system assigned no driver or a wrong driver. This requires to uninstall current drivers and to re-install them. Follow the procedure as below:
    - Do not disconnect your TXP5001AD.
    - Open the Device Manager from Control panel, go to the entry **Ports (COM & LPT)** and expand it.

- Right-click to the entries that are related to TXP and/or marked with a ?. Select the **Uninstall** option and check the box "Delete the driver software for this device". Repeat this for all 4 ports.
- Disconnect the TXP5001AD from the USB port, reconnect it and make sure that the drivers are being installed now properly.

## 7 Appendix

### 7.1 Technical Data

<b>Specification</b>	
Remote Control Port	USB 2.0
Number of Module Slots	1
Max. Power Consumption	36 W
<b>Power Supply</b>	
Mains Voltage	100 V to 240 V $\pm$ 10%
Mains Frequency	50 to 60 Hz $\pm$ 5%
Maximum Power Consumption	75 VA
<b>General</b>	
Operating Temperature Range <sup>1)</sup>	0 °C to +40 °C
Storage Temperature Range	-40 °C to +70 °C
Dimensions (W x H x D)	124 x 23 x 112 mm
Relative Humidity	Max. 90% up to 31°C decreasing to 50% at 40 °C
Pollution Degree (indoor use only)	2
Operation Altitude	< 2000 m
Warm-up Time (typ.)	10 min
Weight (empty)	0.2 kg

<sup>1)</sup> non-condensing

All technical data are valid at 23  $\pm$  5°C and 45  $\pm$  15% rel. humidity (non condensing)



## 7.2 Certifications and Compliances

Category	Standards or description	
EC Declaration of Conformity - EMC	Meets intent of Directive 2004/108/EC <sup>1</sup> for Electromagnetic Compatibility. Compliance was demonstrated to the following specifications as listed in the Official Journal of the European Communities:	
	EN 61326	EMC requirements for Class A electrical equipment for measurement, control and laboratory use, including Class A Radiated and Conducted Emissions and Immunity <sup>2,3</sup> .
	IEC 61000-4-2	Electrostatic Discharge Immunity (Performance Criterion C) <sup>2</sup> .
	IEC 61000-4-3	Radiated RF Electromagnetic Field Immunity (Performance Criterion A) <sup>2</sup> .
	IEC 61000-4-4	Electrical Fast Transient / Burst Immunity (Performance Criterion C) <sup>2</sup> .
<sup>1</sup> Replaces 89/336/EEC.		
<sup>2</sup> For full compliance with these standards, this unit must be operated in a grounded and shielded housing. The power supply must be properly filtered.		
<sup>3</sup> Emissions, which exceed the levels required by these standards, may occur when this equipment is connected to a test object.		

## 7.3 Warranty

Thorlabs GmbH warrants material and production of the TXP5001AD for a period of 24 months starting with the date of shipment. During this warranty period Thorlabs GmbH will see to defaults by repair or by exchange if these are entitled to warranty.

For warranty repairs or service the unit must be sent back to Thorlabs GmbH. The customer will carry the shipping costs to Thorlabs GmbH, in case of warranty repairs Thorlabs GmbH will carry the shipping costs back to the customer.

If no warranty repair is applicable the customer also has to carry the costs for back shipment.

In case of shipment from outside EU duties, taxes etc. which should arise have to be carried by the customer.

Thorlabs GmbH warrants the hard- and/or software determined by Thorlabs GmbH for this unit to operate fault-free provided that they are handled according to our requirements. However, Thorlabs GmbH does not warrant a fault free and uninterrupted operation of the unit, of the software or firmware for special applications nor this instruction manual to be error free. Thorlabs GmbH is not liable for consequential damages.

### Restriction of warranty

The warranty mentioned before does not cover errors and defects being the result of improper treatment, software or interface not supplied by us, modification, misuse or operation outside the defined ambient stated by us or unauthorized maintenance.

Further claims will not be consented to and will not be acknowledged. Thorlabs GmbH does explicitly not warrant the usability or the economical use for certain cases of application.

Thorlabs GmbH reserves the right to change this instruction manual or the technical data of the described unit at any time.

## 7.4 Copyright and Exclusion of Reliability

*Thorlabs GmbH* has taken every possible care in preparing this document. We however assume no liability for the content, completeness or quality of the information contained therein. The content of this document is regularly updated and adapted to reflect the current status of the hardware and/or software. We furthermore do not guarantee that this product will function without errors, even if the stated specifications are adhered to.

Under no circumstances can we guarantee that a particular objective can be achieved with the purchase of this product.

Insofar as permitted under statutory regulations, we assume no liability for direct damage, indirect damage or damages suffered by third parties resulting from the purchase of this product. In no event shall any liability exceed the purchase price of the product.

Please note that the content of this document is neither part of any previous or existing agreement, promise, representation or legal relationship, nor an alteration or amendment thereof. All obligations of *Thorlabs GmbH* result from the respective contract of sale, which also includes the complete and exclusively applicable warranty regulations. These contractual warranty regulations are neither extended nor limited by the information contained in this document. Should you require further information on this product, or encounter specific problems that are not discussed in sufficient detail in the document, please contact your local *Thorlabs GmbH* dealer or system installer.

All rights reserved. This document may not be reproduced, transmitted or translated to another language, either as a whole or in parts, without the prior written permission of *Thorlabs GmbH*.

Copyright © Thorlabs GmbH 2017. All rights reserved.

## 7.5 Thorlabs 'End of Life' Policy

As required by the WEEE (Waste Electrical and Electronic Equipment Directive) of the European Community and the corresponding national laws, Thorlabs GmbH offers all end users in the EC the possibility to return “end of life” units without incurring disposal charges.

This offer is valid for Thorlabs GmbH electrical and electronic equipment

- sold after August 13<sup>th</sup> 2005
- marked correspondingly with the crossed out “wheelie bin” logo (see figure below)
- sold to a company or institute within the EC
- currently owned by a company or institute within the EC
- still complete, not disassembled and not contaminated

As the WEEE directive applies to self contained operational electrical and electronic products, this “end of life” take back service does not refer to other Thorlabs GmbH products, such as

- pure OEM products, that means assemblies to be built into a unit by the user (e. g. OEM laser driver cards)
- components
- mechanics and optics
- left over parts of units disassembled by the user (PCB's, housings etc.).

### Waste treatment on your own responsibility

If you do not return an “end of life” unit to Thorlabs GmbH, you must hand it to a company specialized in waste recovery. Do not dispose of the unit in a litter bin or at a public waste disposal site.

WEEE Number (Germany) : DE97581288

### Ecological background

It is well known that waste treatment pollutes the environment by releasing toxic products during decomposition. The aim of the European RoHS Directive is to reduce the content of toxic substances in electronic products in the future.

The intent of the WEEE Directive is to enforce the recycling of WEEE. A controlled recycling of end-of-life products will thereby avoid negative impacts on the environment.



*Crossed out  
"Wheelie Bin" symbol*

## 7.6 Thorlabs Worldwide Contacts

### USA, Canada, and South America

Thorlabs, Inc.  
56 Sparta Avenue  
Newton, NJ 07860  
USA  
Tel: 973-579-7227  
Fax: 973-300-3600  
[www.thorlabs.com](http://www.thorlabs.com)  
[www.thorlabs.us](http://www.thorlabs.us) (West Coast)  
Email: [sales@thorlabs.com](mailto:sales@thorlabs.com)  
Support: [techsupport@thorlabs.com](mailto:techsupport@thorlabs.com)

### Europe

Thorlabs GmbH  
Hans-Böckler-Str. 6  
85221 Dachau  
Germany  
Tel: +49-8131-5956-0  
Fax: +49-8131-5956-99  
[www.thorlabs.de](http://www.thorlabs.de)  
Email: [europe@thorlabs.com](mailto:europe@thorlabs.com)

### France

Thorlabs SAS  
109, rue des Côtes  
78600 Maisons-Laffitte  
France  
Tel: +33-970 444 844  
Fax: +33-811 38 17 48  
[www.thorlabs.com](http://www.thorlabs.com)  
Email: [sales.fr@thorlabs.com](mailto:sales.fr@thorlabs.com)

### Japan

Thorlabs Japan, Inc.  
Higashi Ikebukuro  
Q Building 2nd Floor 2-23-2  
Toshima-ku, Tokyo 170-0013  
Japan  
Tel: +81-3-5979-8889  
Fax: +81-3-5979-7285  
[www.thorlabs.jp](http://www.thorlabs.jp)  
Email: [sales@thorlabs.jp](mailto:sales@thorlabs.jp)

### UK and Ireland

Thorlabs Ltd.  
1 Saint Thomas Place, Ely  
Cambridgeshire CB7 4EX  
United Kingdom  
Tel: +44-1353-654440  
Fax: +44-1353-654444  
[www.thorlabs.com](http://www.thorlabs.com)  
Email: [sales.uk@thorlabs.com](mailto:sales.uk@thorlabs.com)  
Support: [techsupport.uk@thorlabs.com](mailto:techsupport.uk@thorlabs.com)

### Scandinavia

Thorlabs Sweden AB  
Bergfotsgatan 7  
431 35 Mölndal  
Sweden  
Tel: +46-31-733-30-00  
Fax: +46-31-703-40-45  
[www.thorlabs.com](http://www.thorlabs.com)  
Email: [scandinavia@thorlabs.com](mailto:scandinavia@thorlabs.com)

### Brazil

Thorlabs Vendas de Fotônicos Ltda.  
Rua Riachuelo, 171  
São Carlos, SP 13560-110  
Brazil  
Tel: +55-16-3413 7062  
Fax: +55-16-3413 7064  
[www.thorlabs.com](http://www.thorlabs.com)  
Email: [brasil@thorlabs.com](mailto:brasil@thorlabs.com)

### China

Thorlabs China  
Room A101, No. 100  
Lane 2891, South Qilianshan Road  
Putuo District  
Shanghai 200331  
China  
Tel: +86-21-60561122  
Fax: +86-21-32513480  
[www.thorlabs.com](http://www.thorlabs.com)  
Email: [chinasales@thorlabs.com](mailto:chinasales@thorlabs.com)







**THORLABS**

[www.thorlabs.com](http://www.thorlabs.com)

---