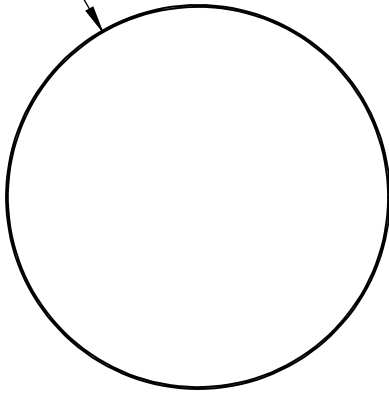
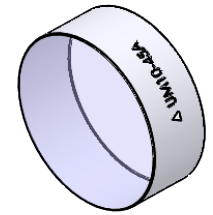
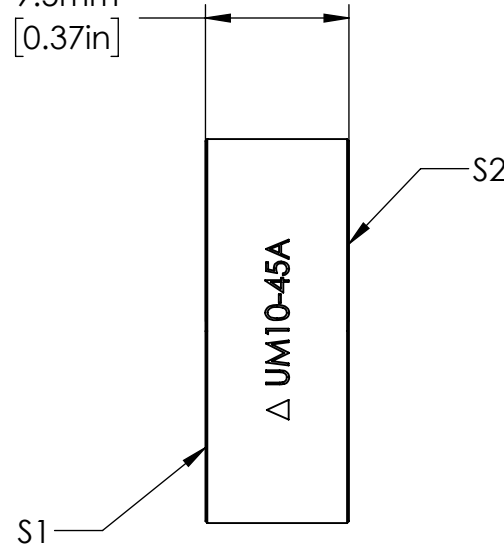


Ø 25.4mm
[1.00in]



9.5mm
[0.37in]



NOTES/SPECIFICATIONS:

1. CLEAR APERTURE: > 80% DIAMETER
2. SURFACE FLATNESS (S1): < $\lambda/6$ AT 632.8 nm OVER CLEAR APERTURE
3. SURFACE QUALITY (S1): 15-5 SCRATCH-DIG
4. SURFACE (S2): POLISHED
5. PARALLELISM: ≤ 3 arcmin
6. THICKNESS TOLERANCE: ± 0.20 mm
7. DIAMETER TOLERANCE: +0.00/-0.10 mm
8. COATING (S1): LOW GDD COATING
AOI: 45°
S-POLARIZATION: R > 99%, |GDD| < 30 fs², 700 nm - 930 nm
P-POLARIZATION: R > 99%, |GDD| < 30 fs², 730 nm - 870 nm

FOR INFORMATION ONLY
NOT FOR MANUFACTURING PURPOSES

DRAWING PROJECTION			THORLABS www.thorlabs.com	
	NAME	DATE	Ø 25.4 mm LOW GDD MIRROR 700 nm - 930 nm, 45° AOI	
DRAWN	EH	11/FEB/19		
APPROVAL	JE	12/APR/19	MATERIAL	REV
COPYRIGHT © 2019 BY THORLABS			FUSED SILICA	C
VALUES IN PARENTHESIS ARE CALCULATED AND MAY CONTAIN ROUND OFF ERRORS			ITEM #	APPROX WEIGHT
			UM10-45A	11 g