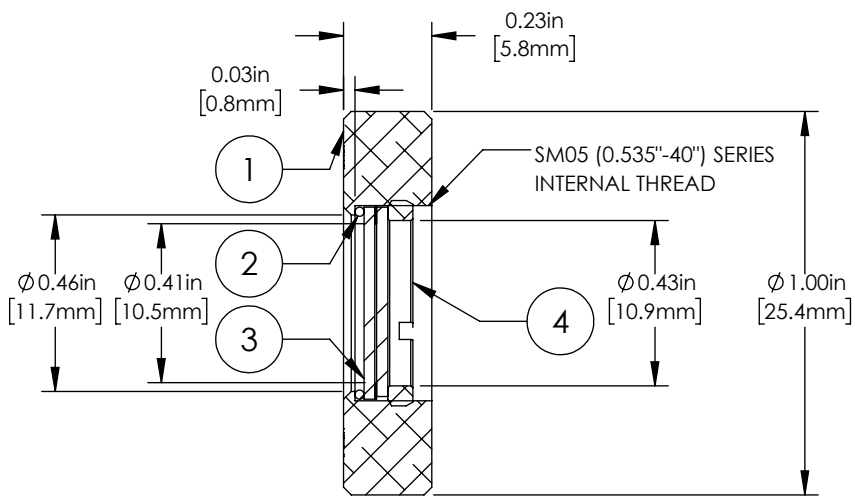
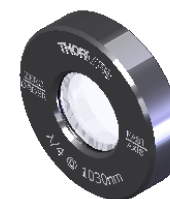
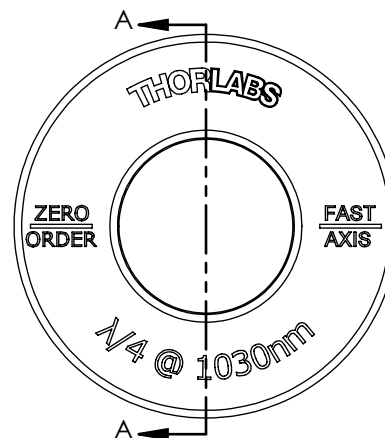


ORDER OF ASSEMBLY

ORDER	PART DESCRIPTION	MATERIAL
①	ENGRAVED HOUSING	ALUMINUM
②	O-RING	NITRILE
③	1030 nm WAVEPLATE ASSY	CRYSTAL QUARTZ/SS
④	SM05RR	ALUMINUM



SECTION A-A



NOTES/SPECIFICATIONS:

1. DESIGN WAVELENGTH: 1030 nm
2. RETARDANCE:  $\lambda/4$
3. UNMOUNTED DIAMETER:  $0.50'' \pm 0.004$  (12.7 mm  $\pm 0.1$ )
4. BEAM DEVIATION:  $< 10$  arcsec
5. RETARDANCE ACCURACY (TYP):  $< \lambda/300$
6. TRANSMITTED WAVEFRONT ERROR:  $\lambda/8$  (rms) AT 633 nm
7. SURFACE QUALITY: 20-10 SCRATCH-DIG
8. CLEAR APERTURE:  $\varnothing 0.39''$  ( $\varnothing 10.0$  mm)
9. COATING: VAR AT 1030 nm,  $R < 0.25\%$ ,  $0^\circ$  AOI/PER SURFACE (4 TOTAL SURFACES)

FOR INFORMATION ONLY  
NOT FOR MANUFACTURING PURPOSES

DRAWING PROJECTION			<b>THORLABS</b>	
NAME	DATE	MOUNTED ZERO-ORDER QUARTER-WAVE PLATE AT 1030nm		
DRAWN	MG	20/NOV/12	MATERIAL	
APPROVAL	BAG	22/JULY/21	SEE TABLE	REV C
COPYRIGHT © 2021 BY THORLABS			ITEM #	APPROX WEIGHT
VALUES IN PARENTHESIS ARE CALCULATED AND MAY CONTAIN ROUND OFF ERRORS			WPQ05M-1030	6 g